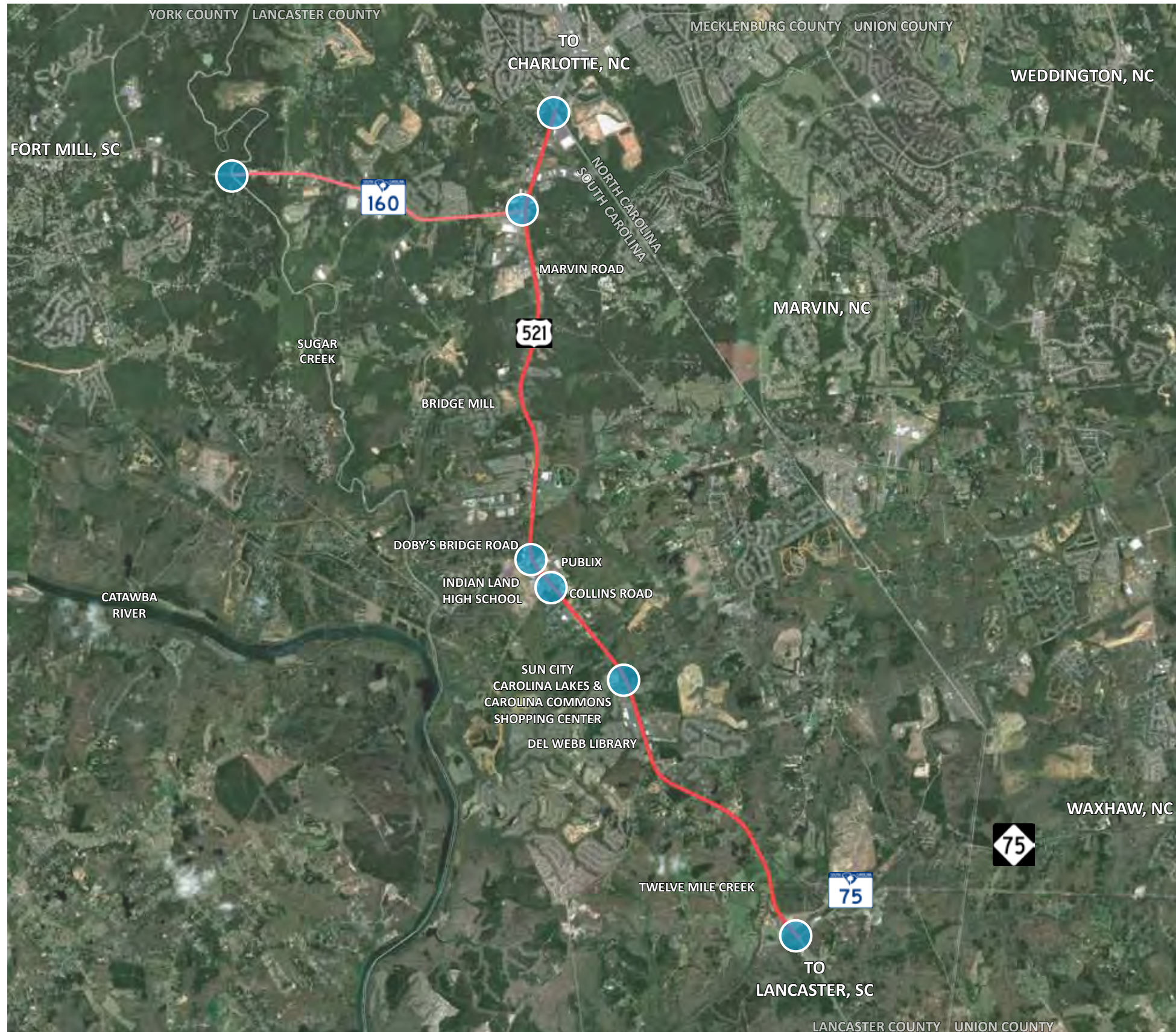





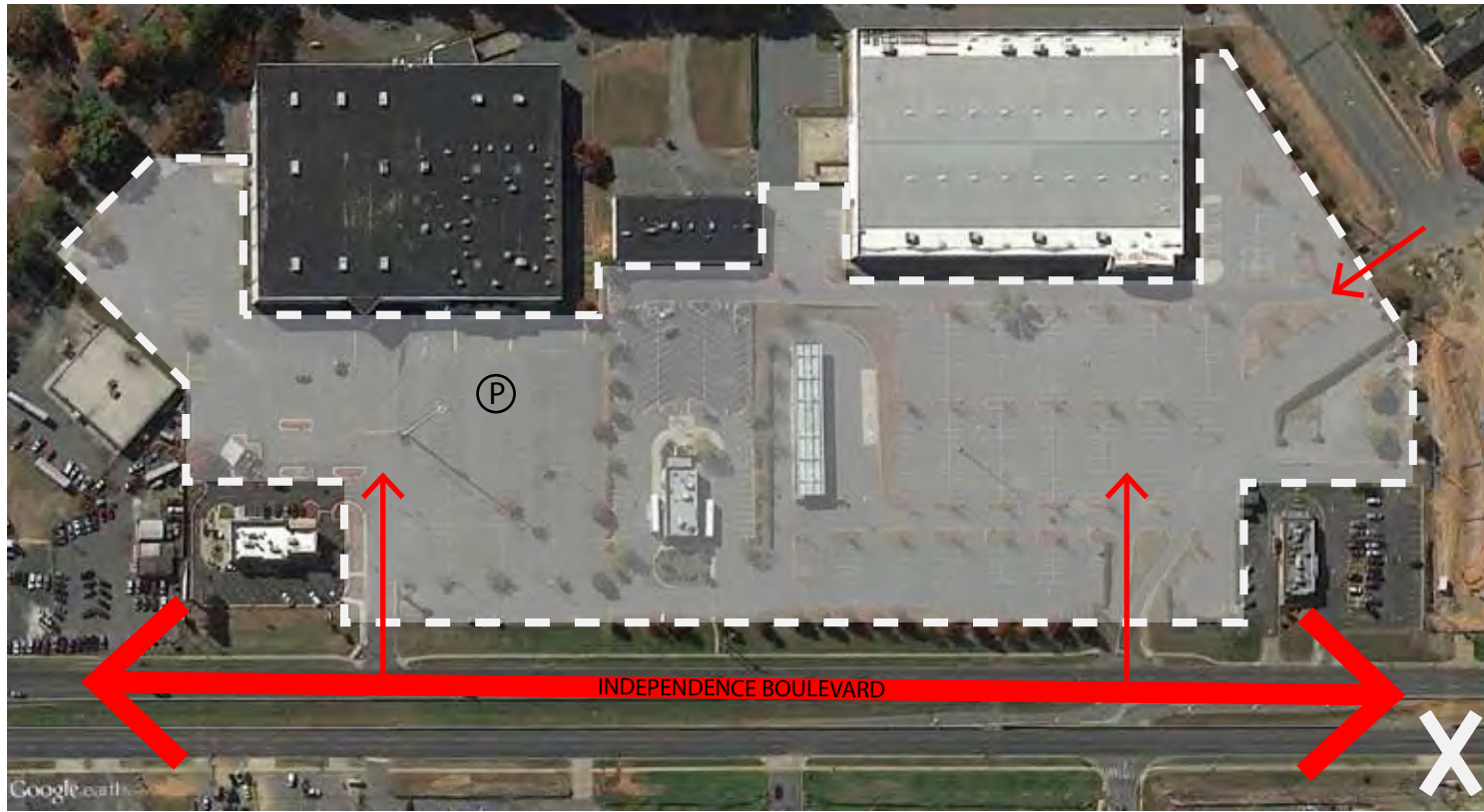
Appendix B



CORRIDOR OVERLAY

The **Highway Corridor Overlay District** is proposed along US Highway 521 from SC Highway 75 (Waxhaw Highway) northward to the North/South Carolina state line, and along SC Highway 160 from US Highway 521 westward to the Lancaster/York county line.

-  US HIGHWAY/ROUTE 521 CORRIDOR: APPROXIMATELY 8.4 MILES
-  SC 160 CORRIDOR: APPROXIMATELY 2.7 MILES
-  SIGNIFICANT INTERSECTIONS/NODES



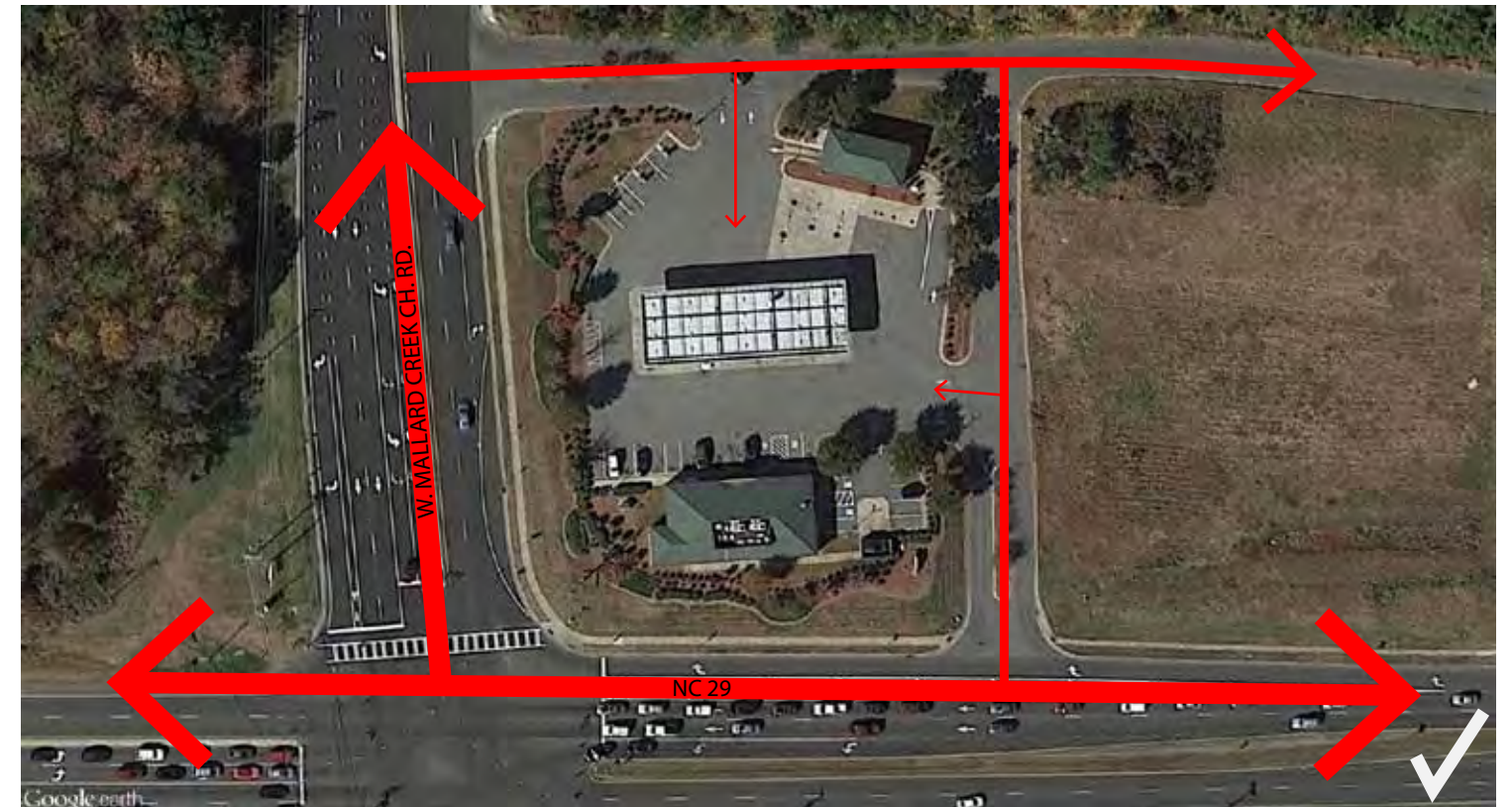
RETAIL, CHARLOTTE, NC



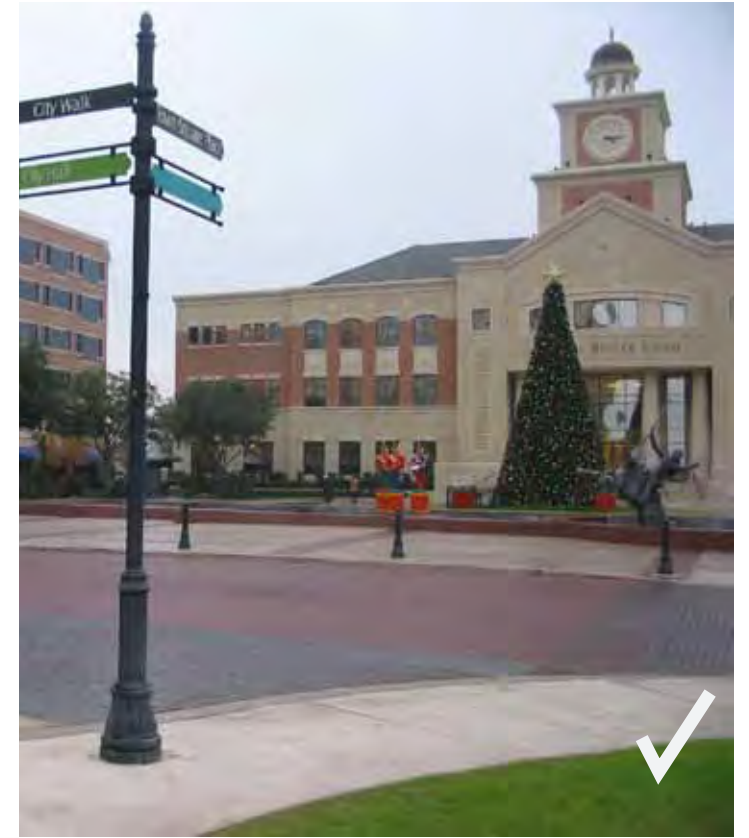
MIXED USE, HUNTERSVILLE, NC

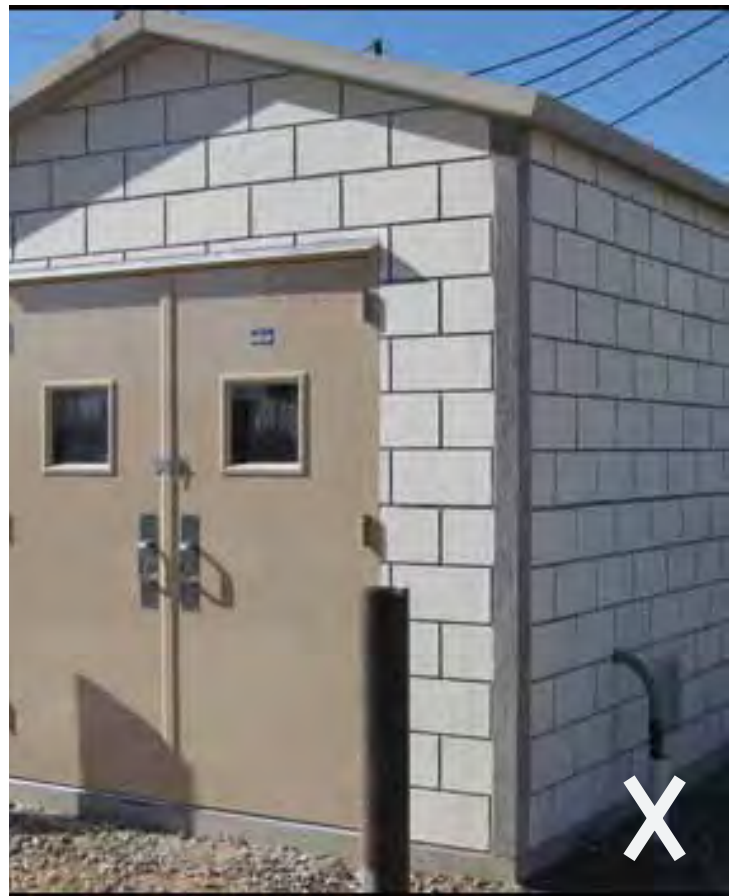


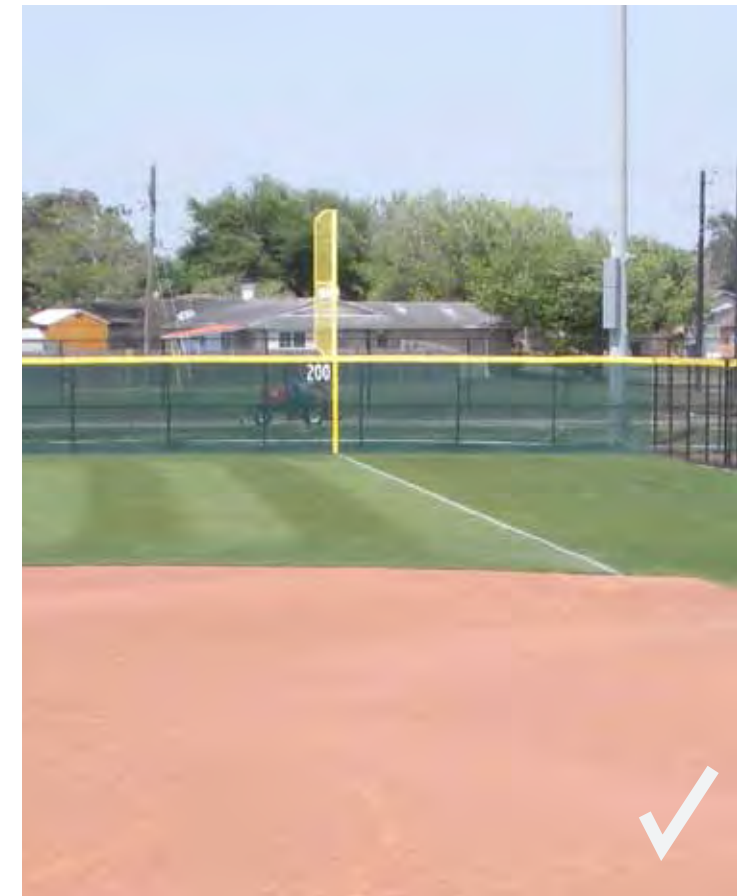
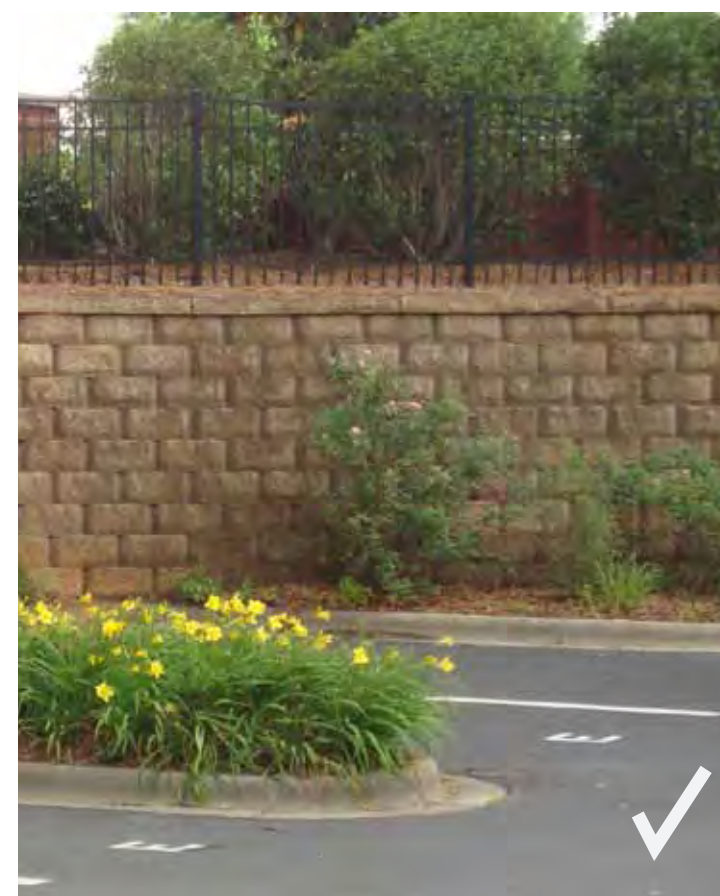
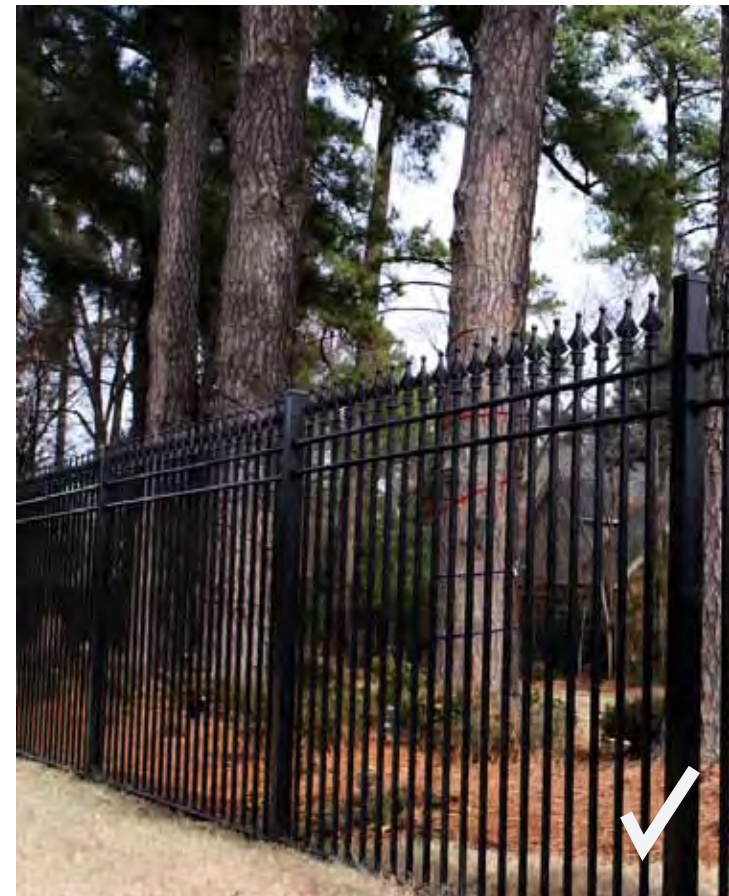
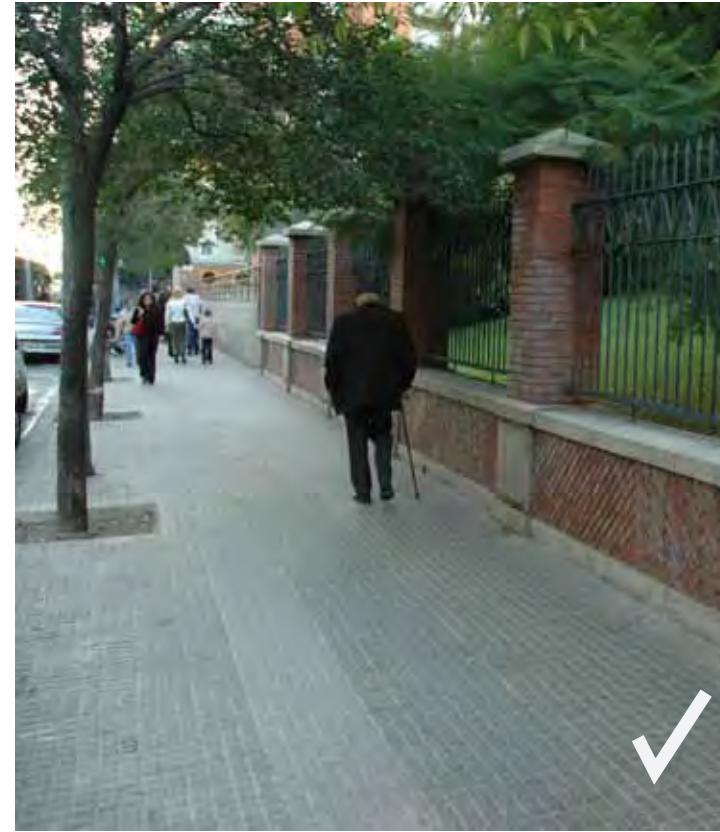
GAS STATION, CHARLOTTE, NC

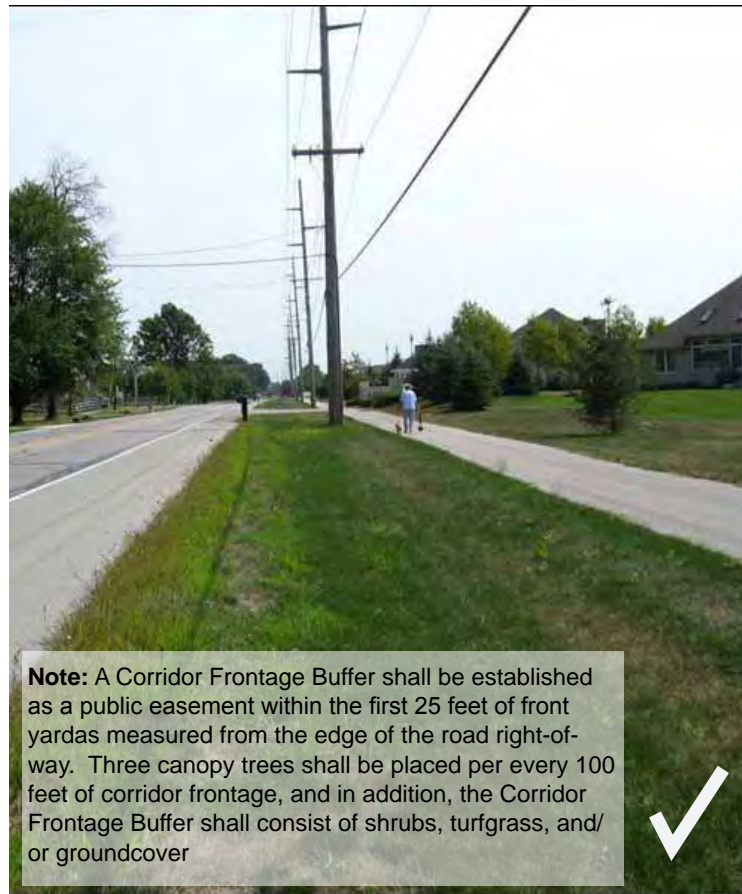
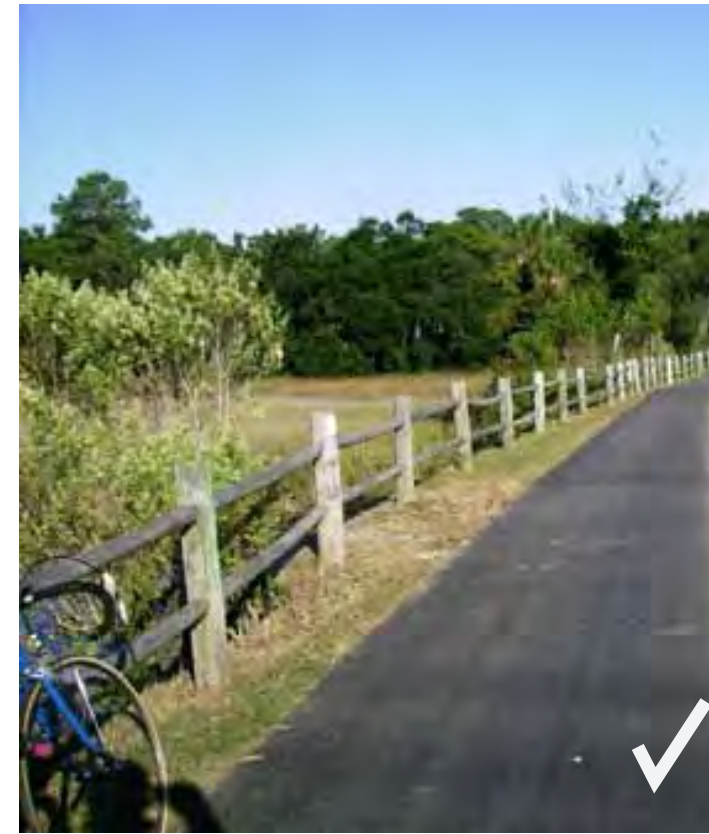


GAS STATION, CHARLOTTE, NC



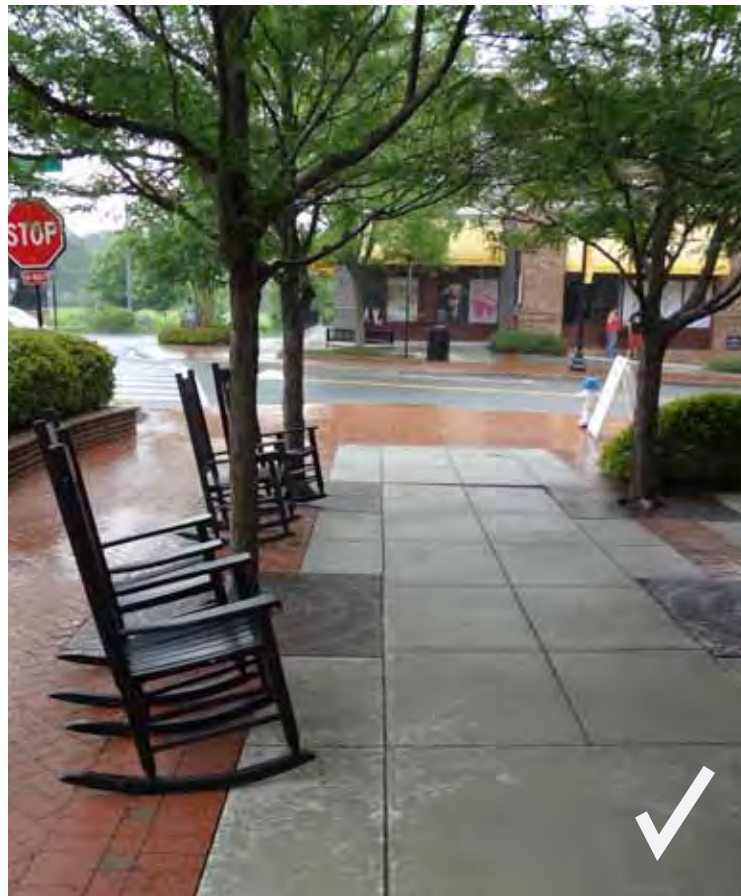
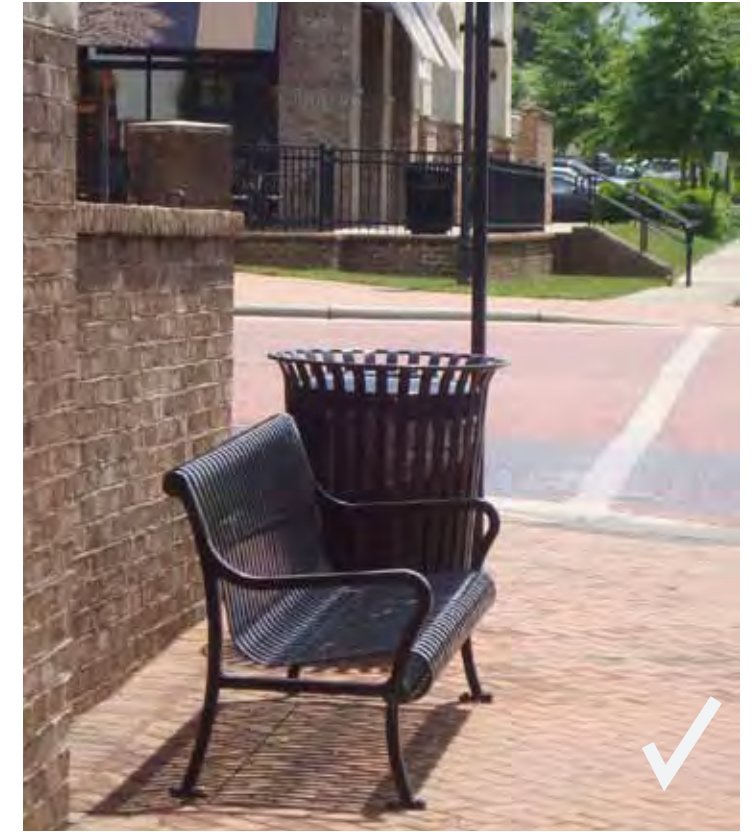
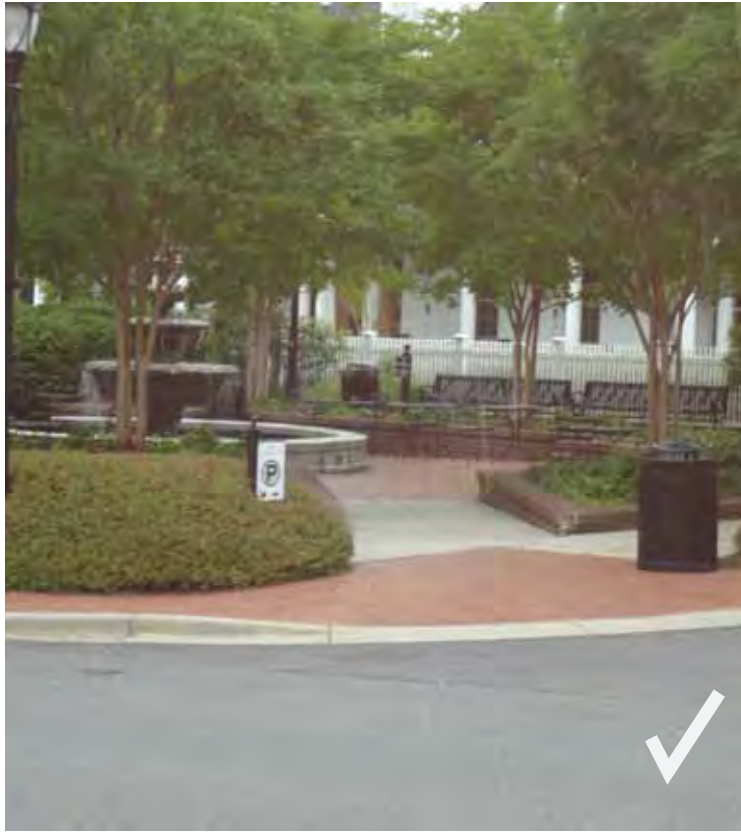


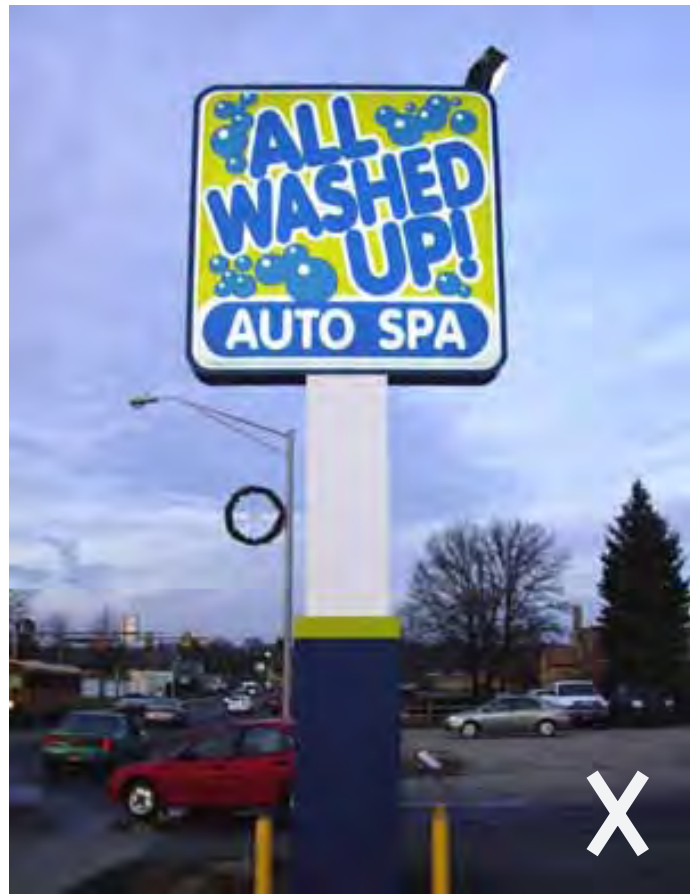


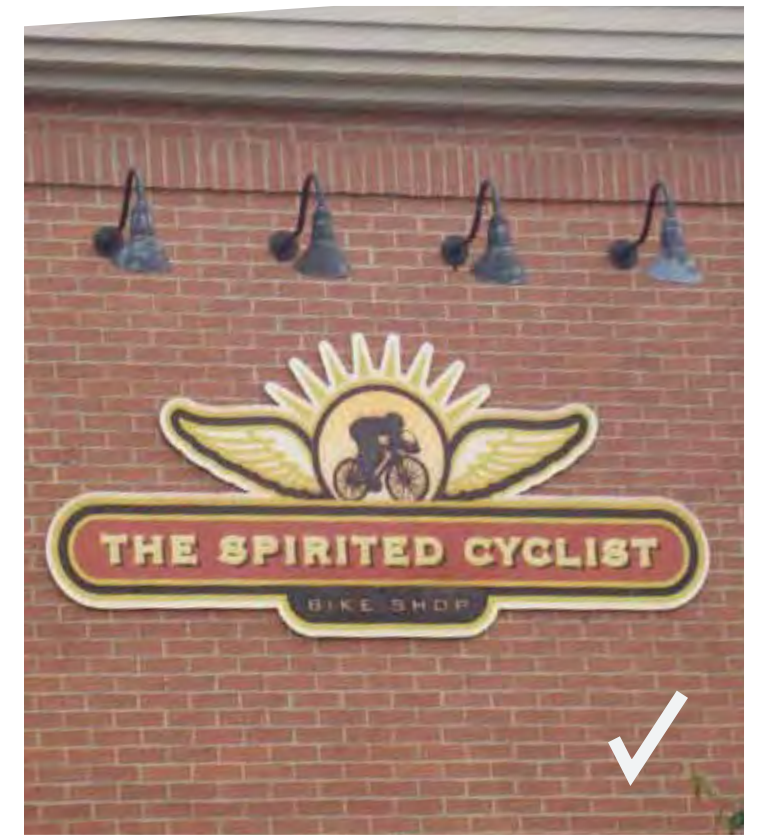


Note: A Corridor Frontage Buffer shall be established as a public easement within the first 25 feet of front yards measured from the edge of the road right-of-way. Three canopy trees shall be placed per every 100 feet of corridor frontage, and in addition, the Corridor Frontage Buffer shall consist of shrubs, turfgrass, and/or groundcover

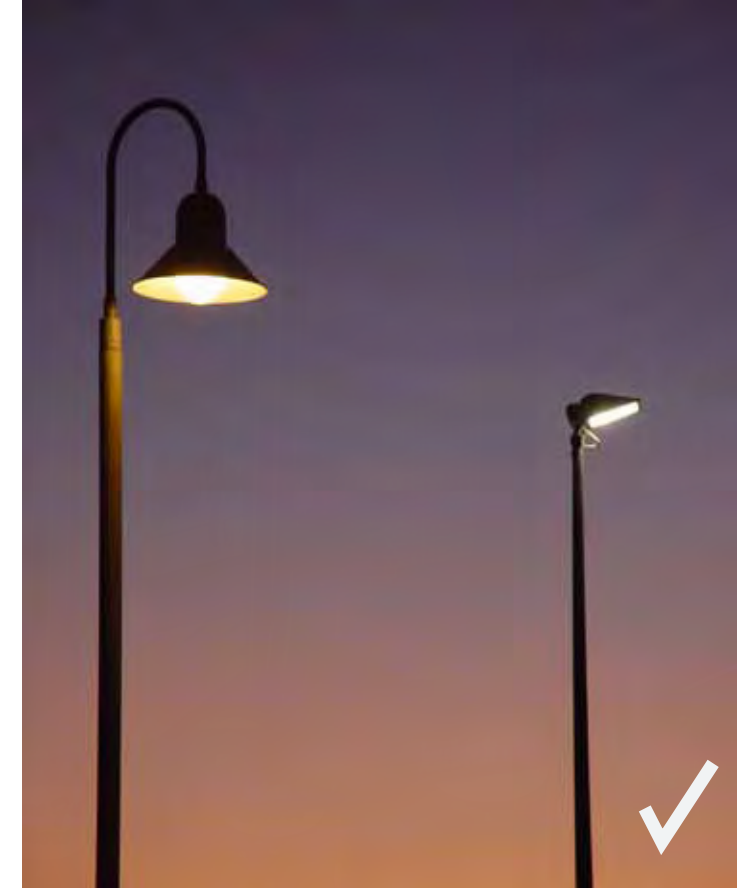
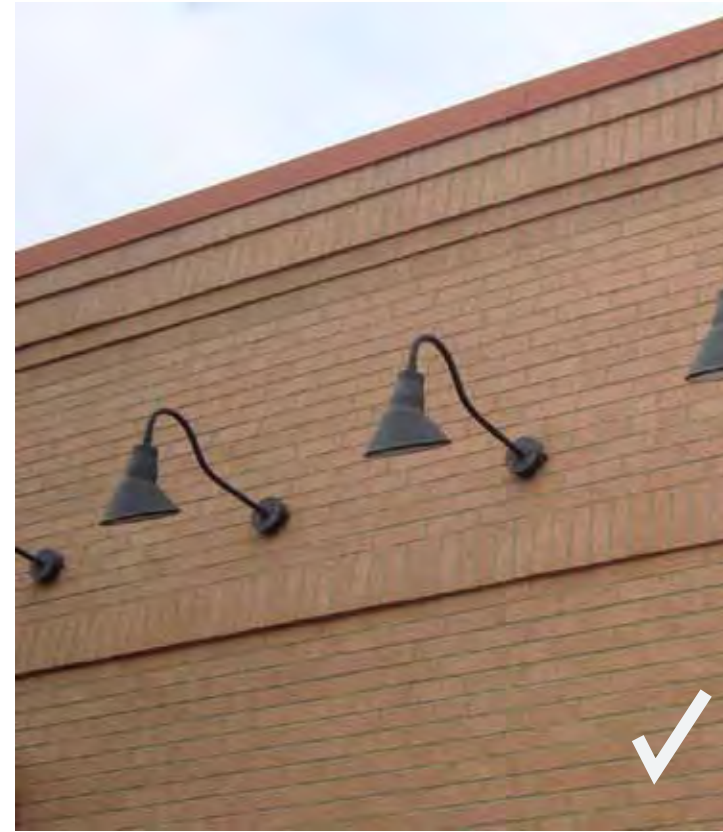
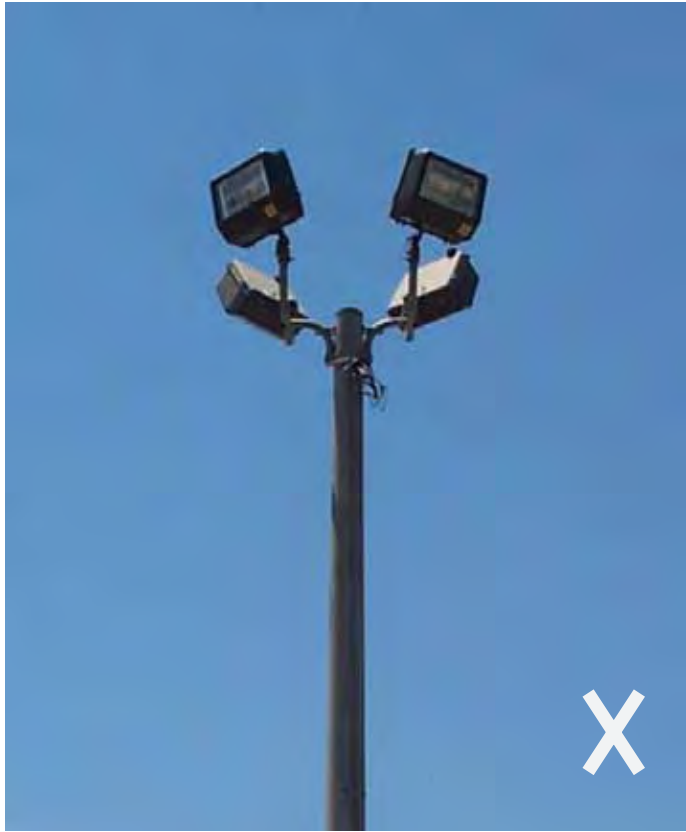










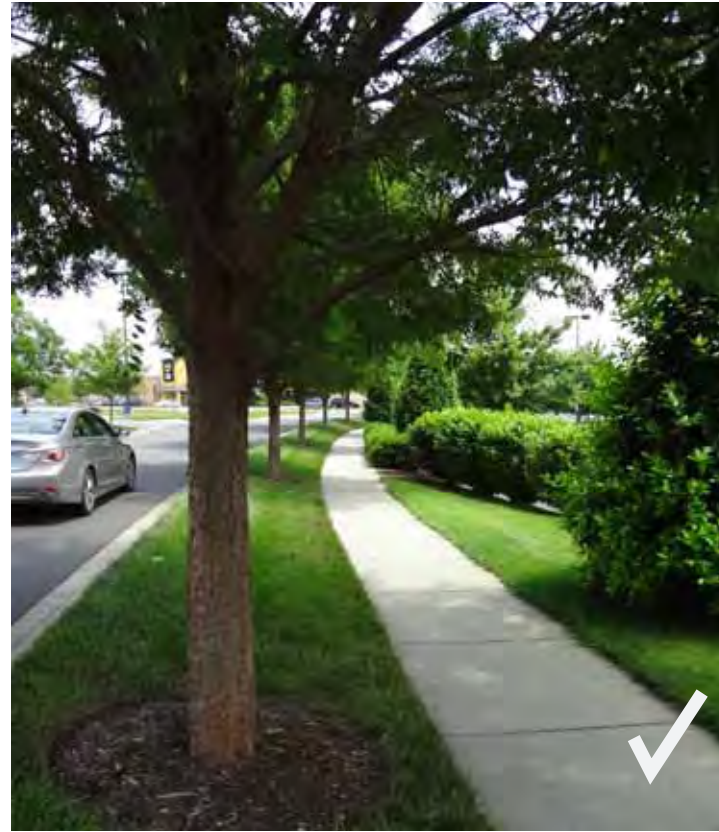
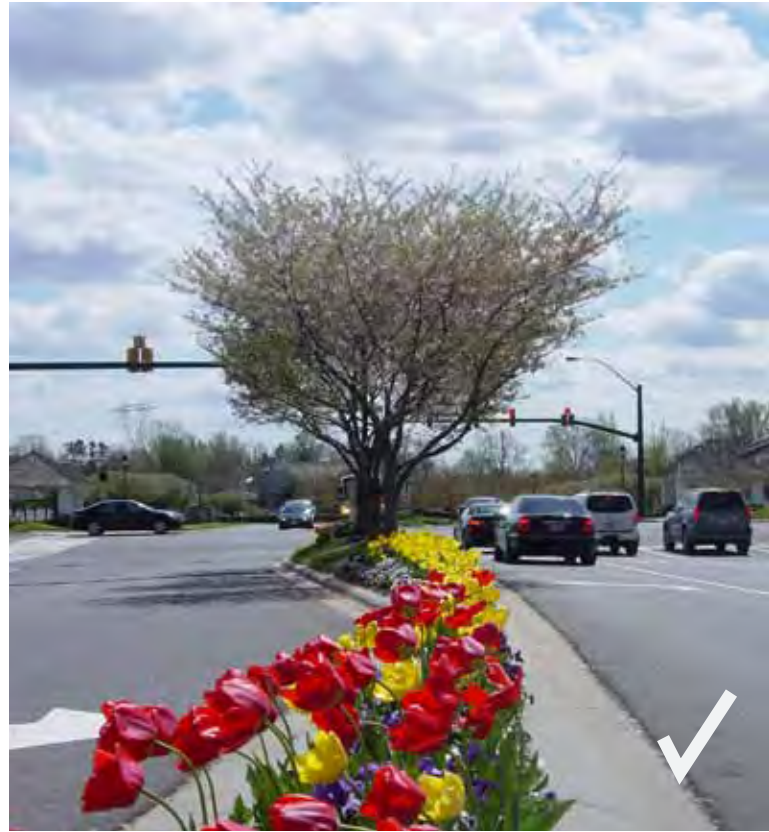


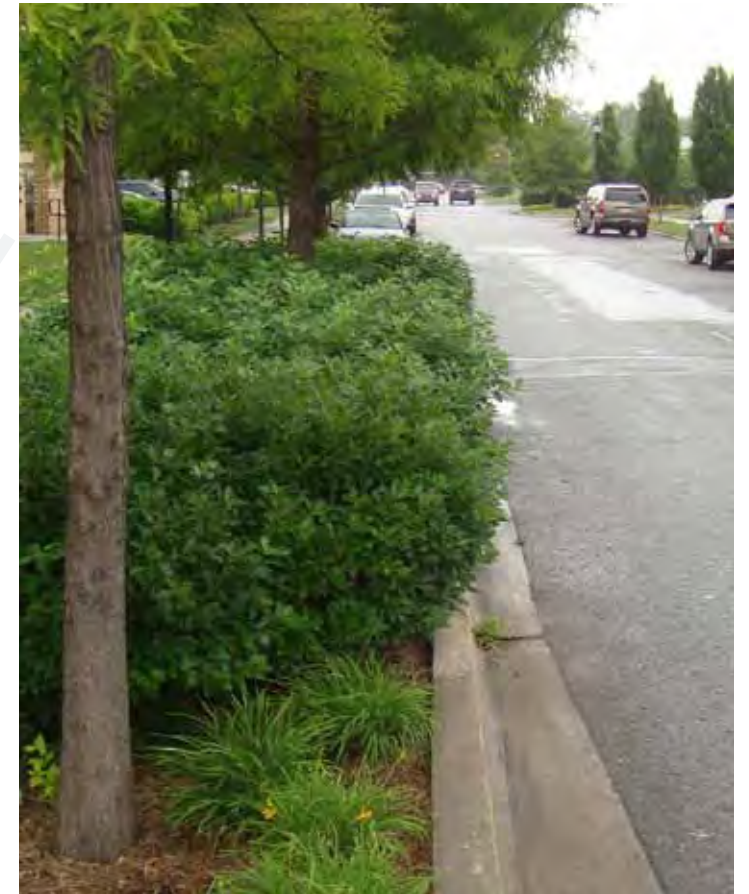
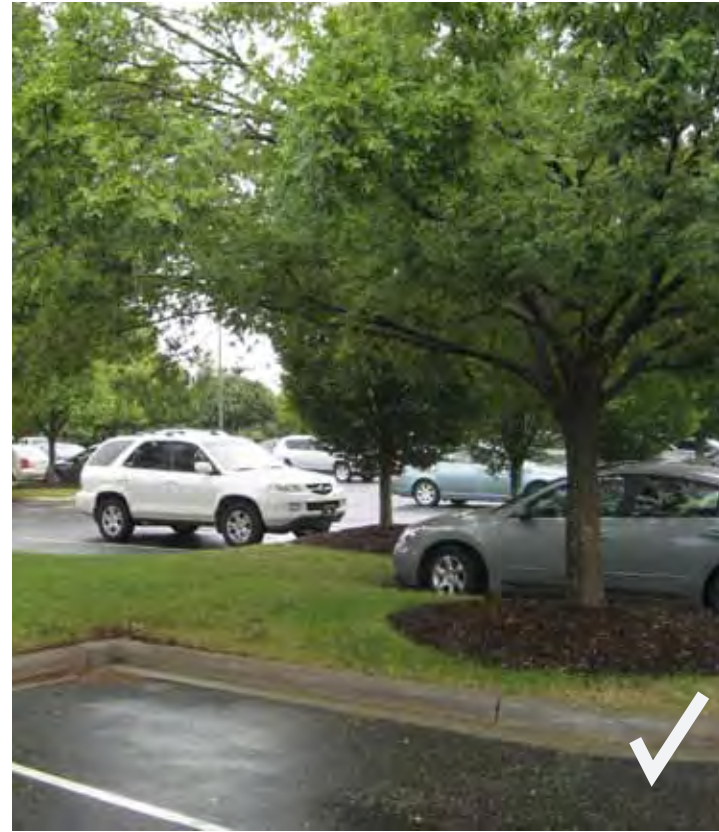
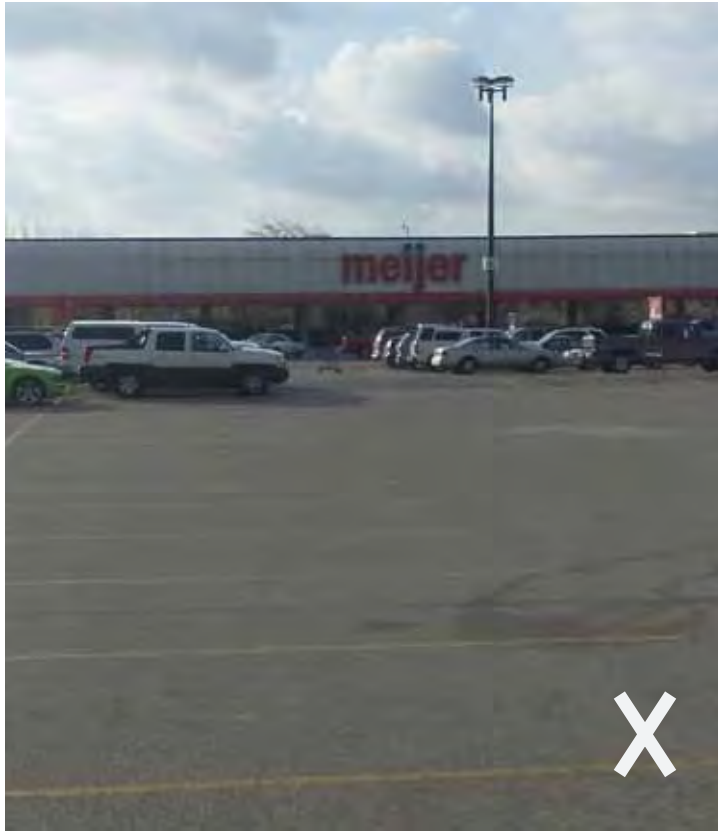














HIGHWAY CORRIDOR OVERLAY DISTRICT
LANCASTER COUNTY, SOUTH CAROLINA

SUPPELEMENTARY DIAGRAMS
INDUSTRIAL DISTRICTS - BULIDING MATERIALS AND VERNACULAR

HWY 521 Typical Section . NTS

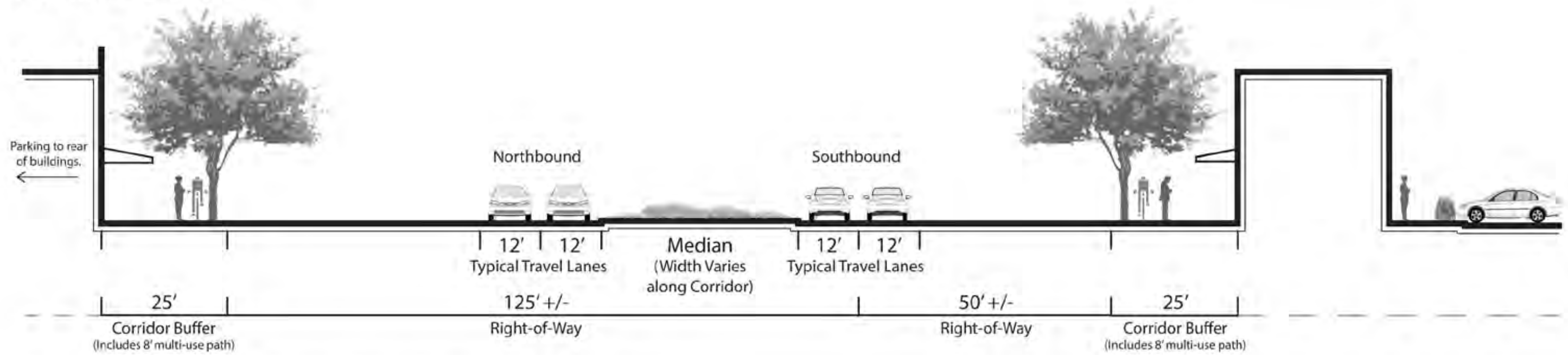


Illustration 1.1, Typical cross section along Highway Corridor Overlay District.