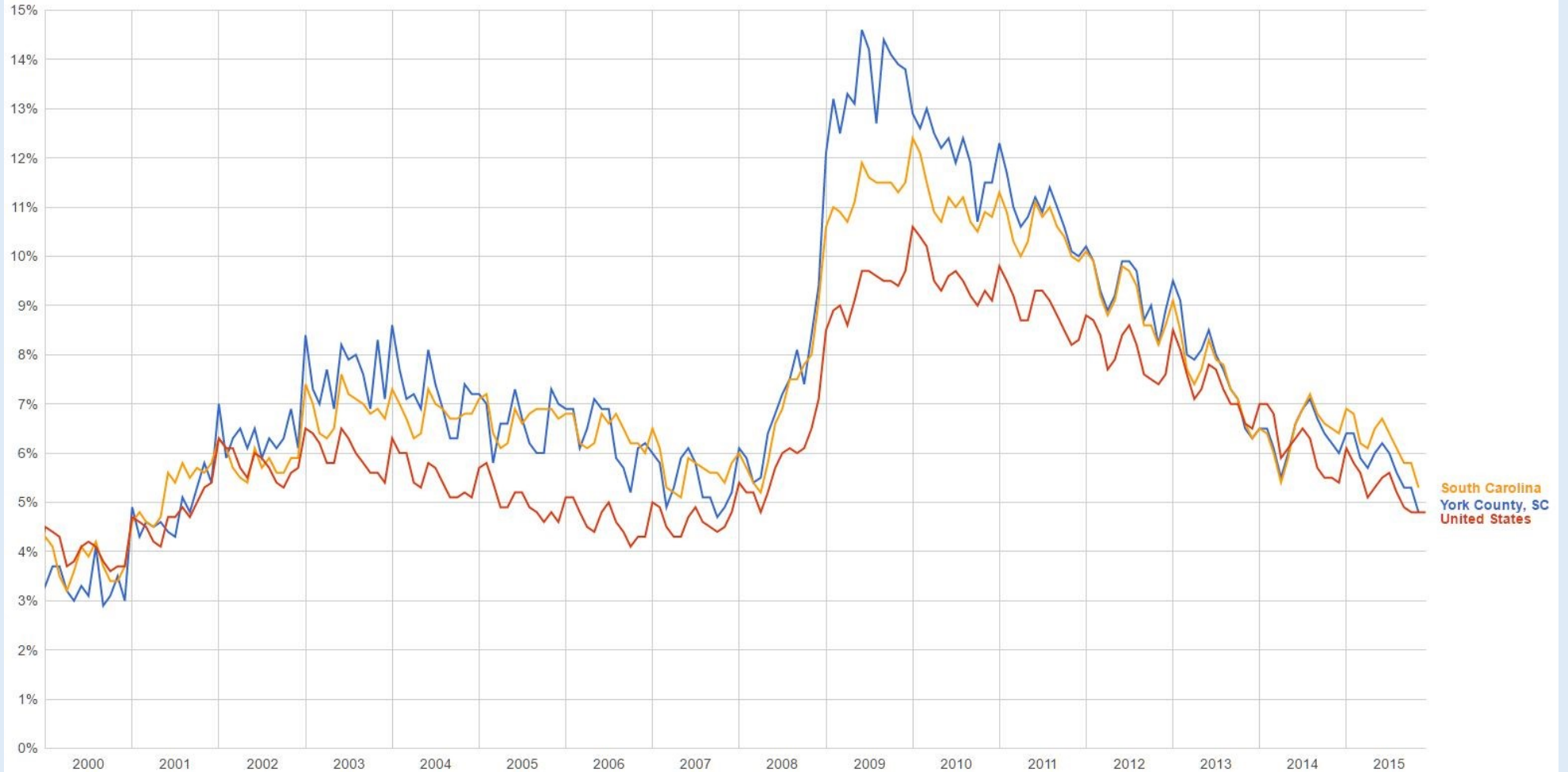


YORK COUNTY

Employment & Industry Report



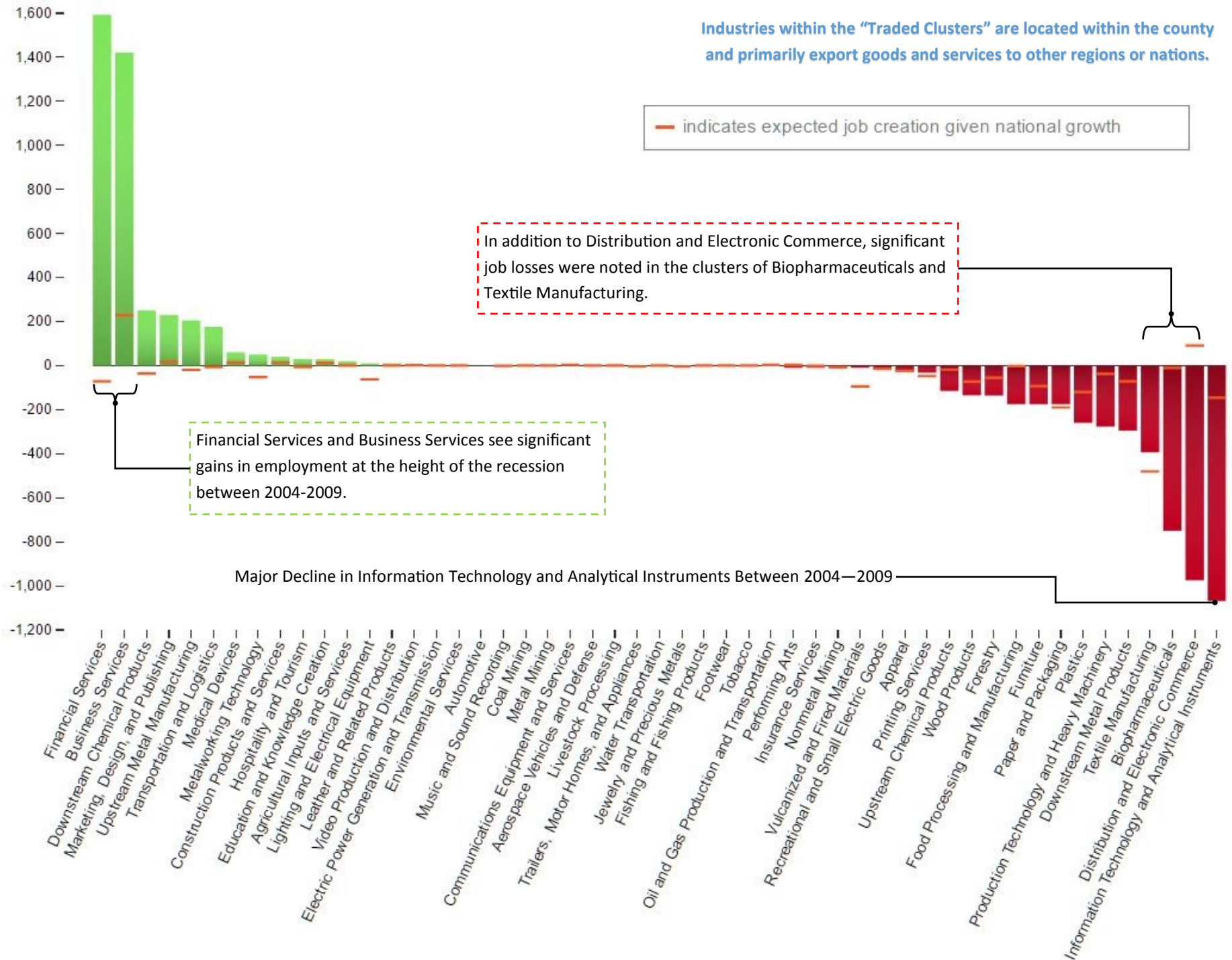
Unemployment Rate

July 2016: 5.1%

Traded Clusters

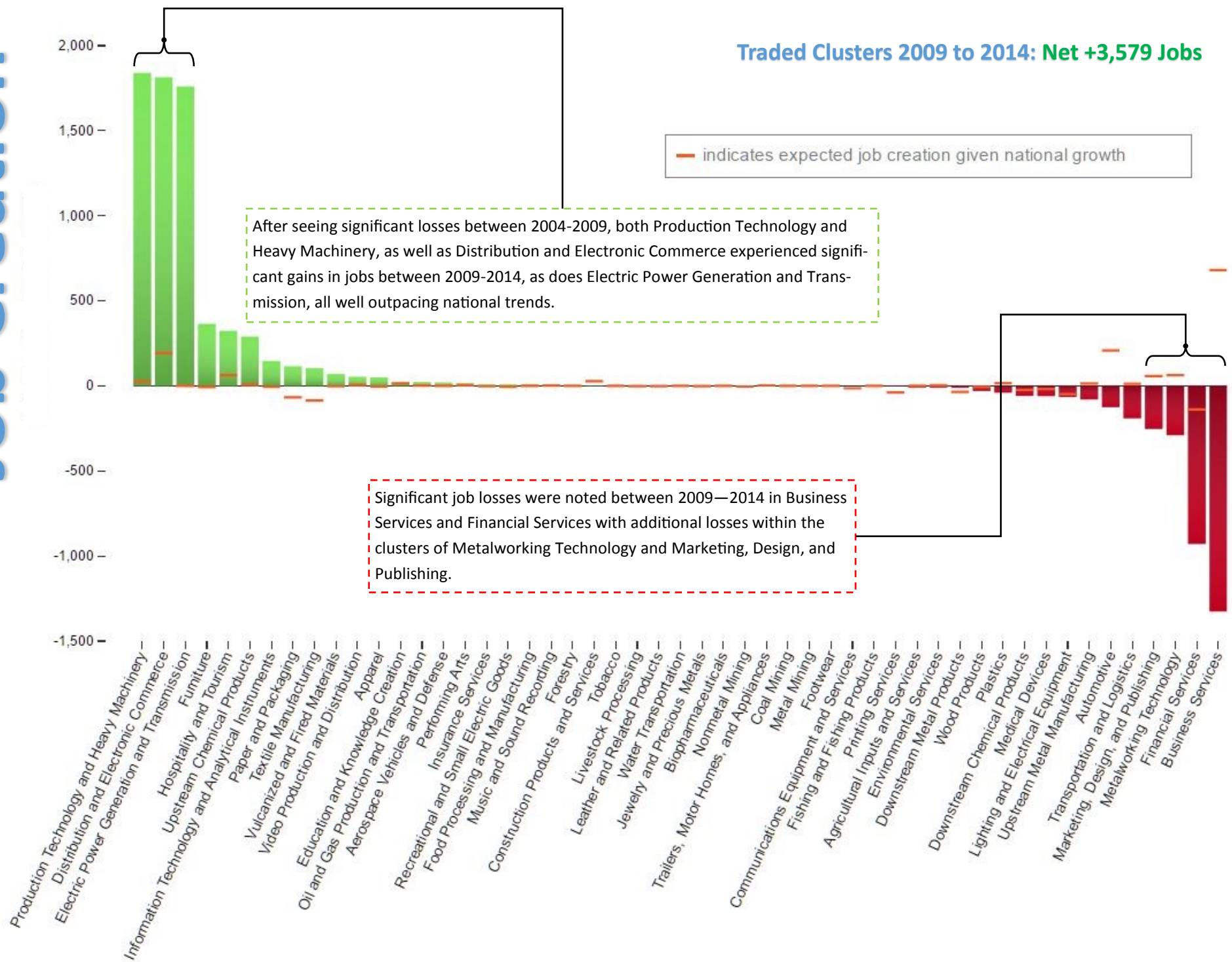
Traded Clusters 2004 to 2009: Net -924 Jobs

Industries within the "Traded Clusters" are located within the county and primarily export goods and services to other regions or nations.



Job Creation -

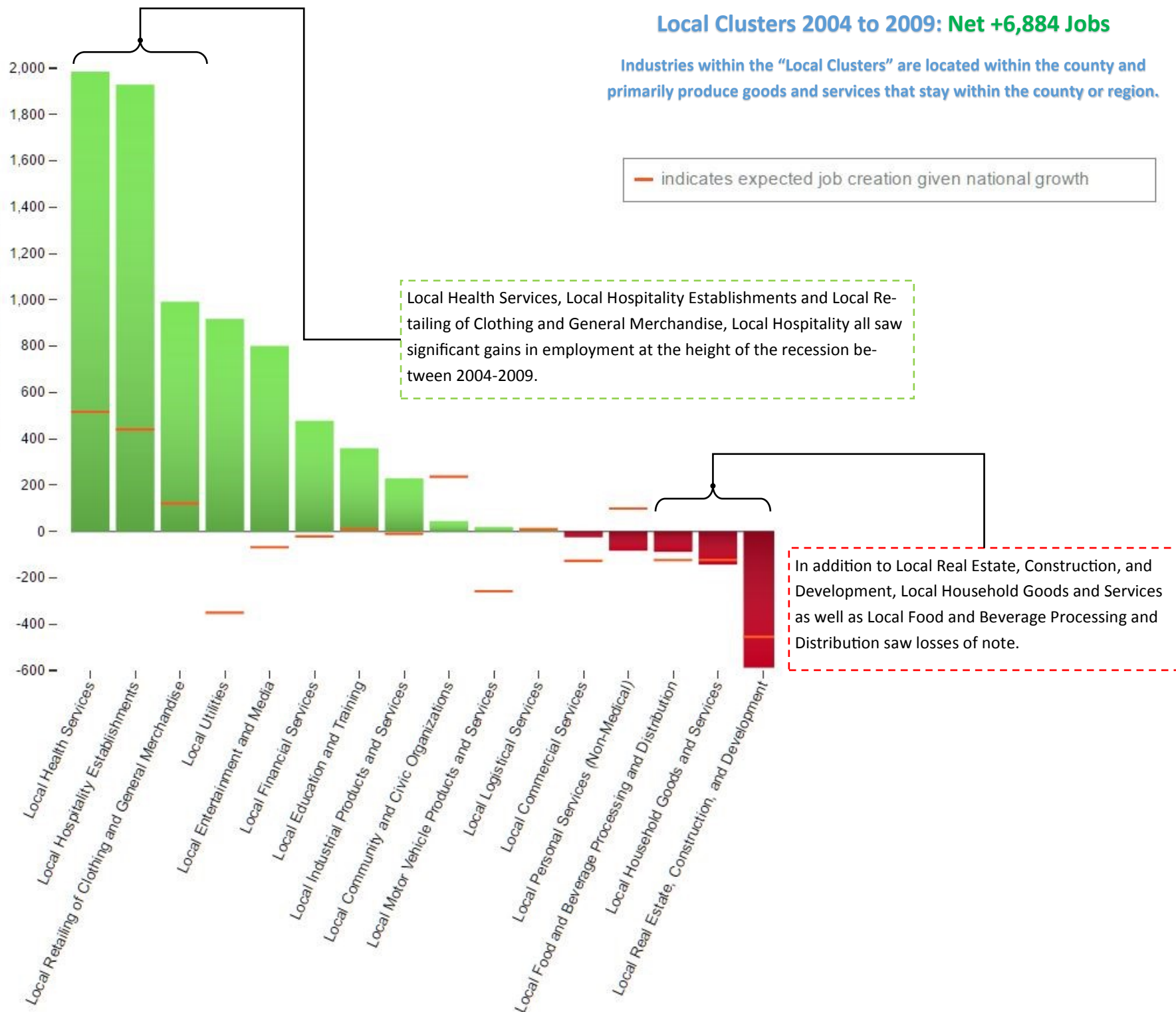
Traded Clusters 2009 to 2014: Net +3,579 Jobs



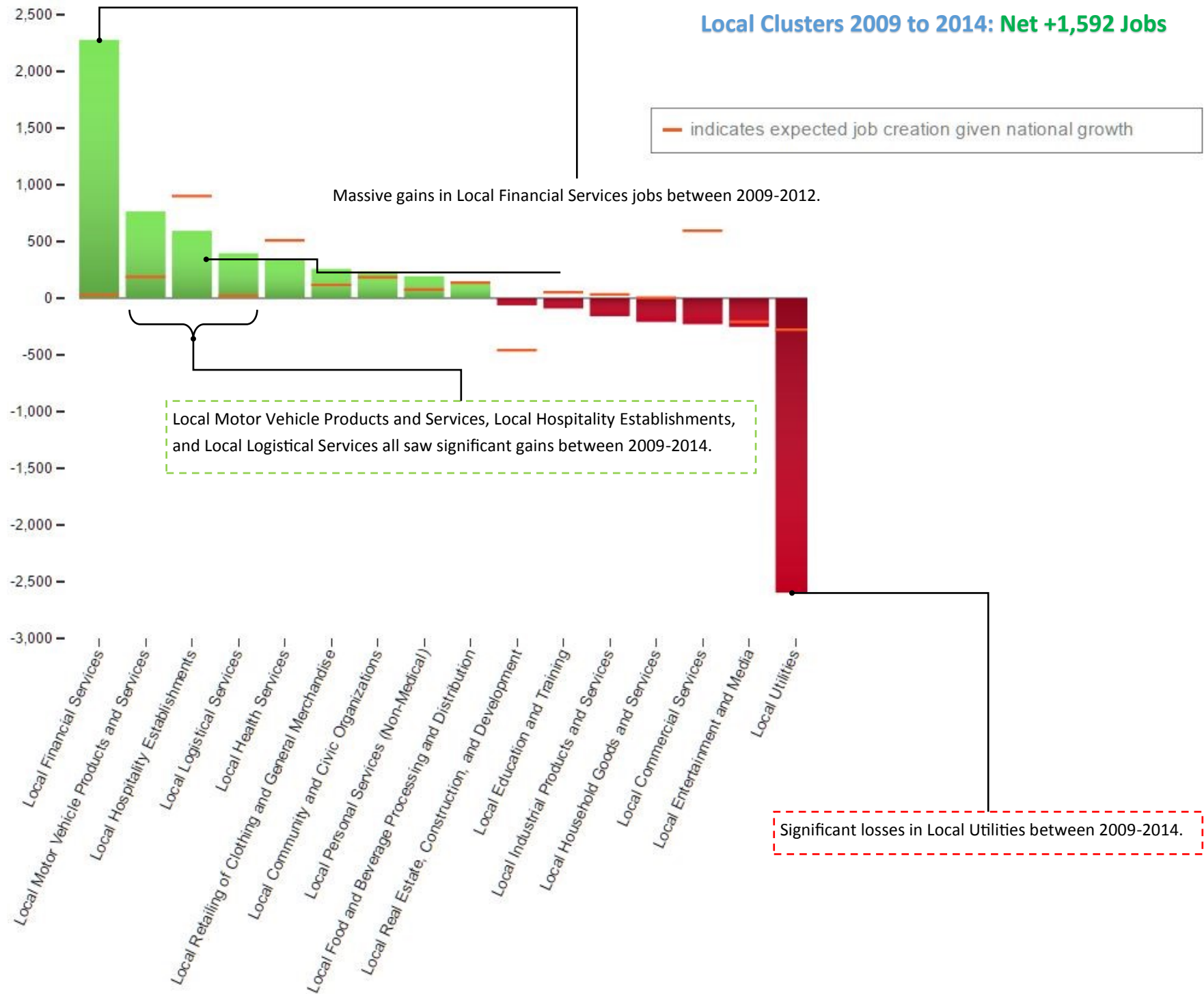
Local Clusters

Local Clusters 2004 to 2009: Net +6,884 Jobs

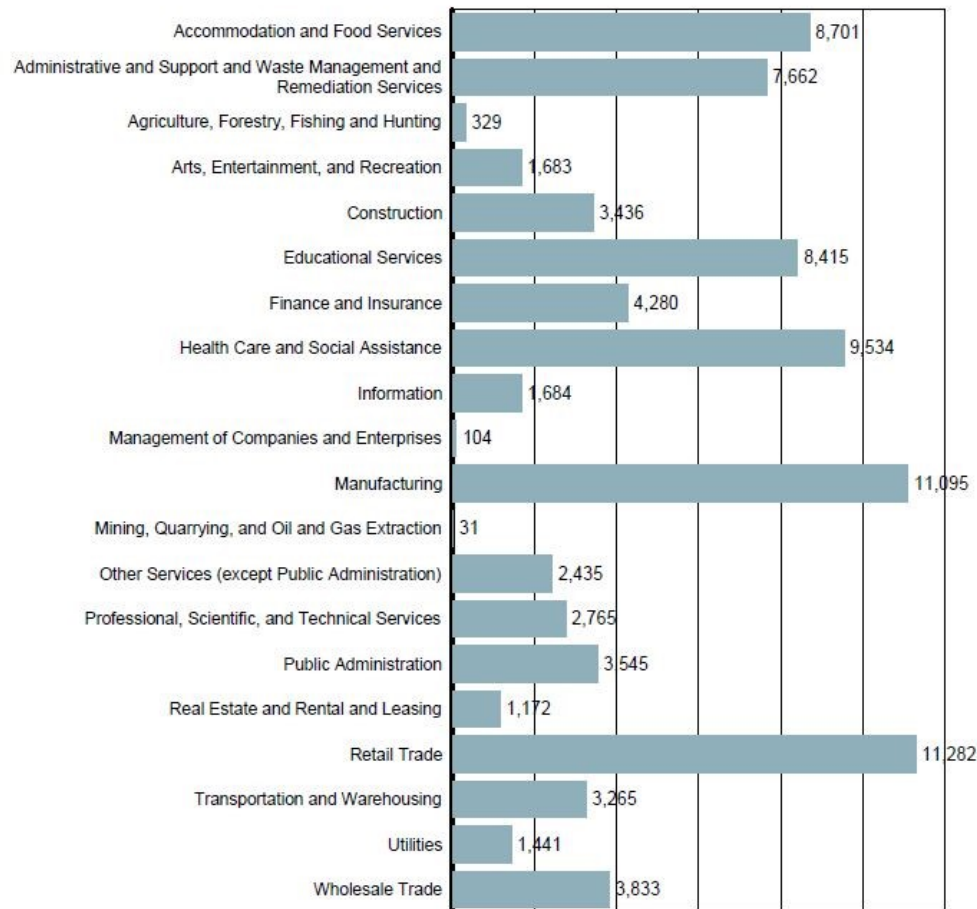
Industries within the "Local Clusters" are located within the county and primarily produce goods and services that stay within the county or region.



Job Creation -



Employment by Industry



Source: S.C. Department of Employment & Workforce
Quarterly Census of Employment and Wages (QCEW) - 2015 Q4

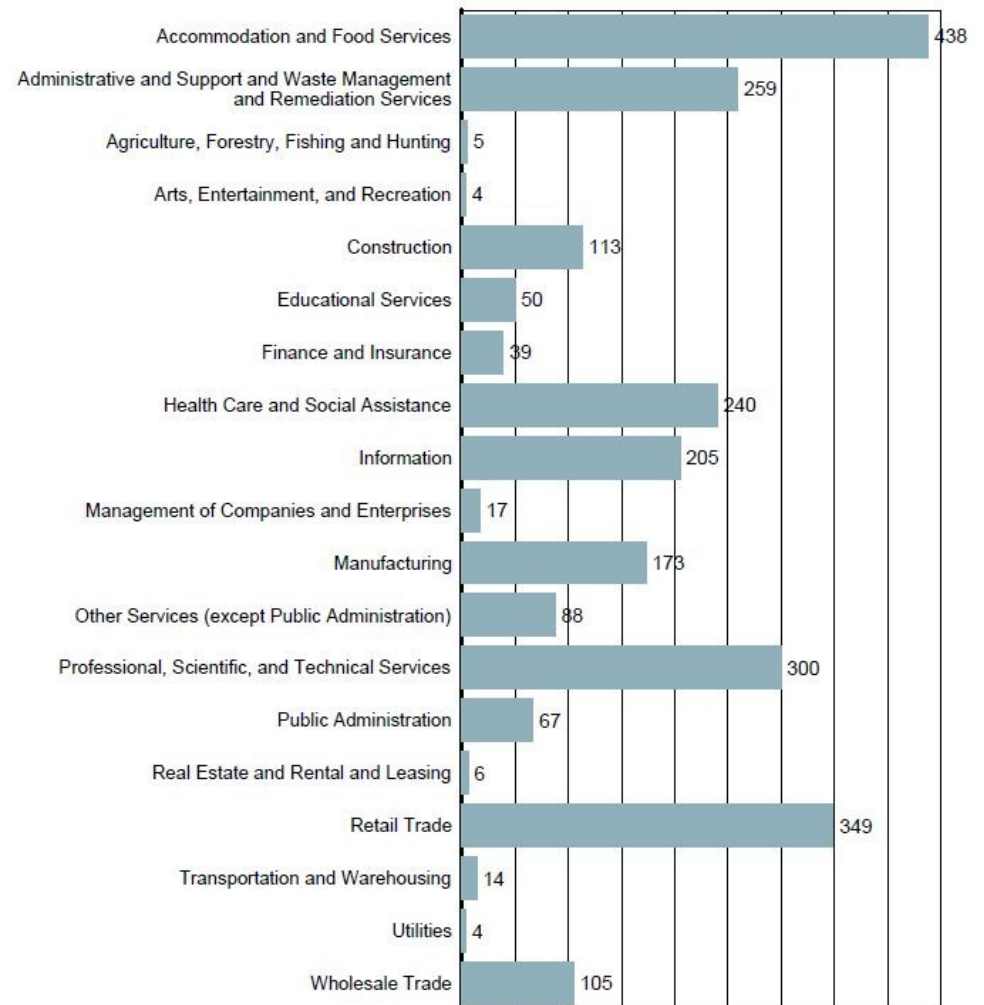
Employment by Industry—2015 Q4

Residents of York County primary source of employment in 2015 Q4 were Retail Trade followed closely by the *Manufacturing, Health Care & Social Assistance, and Accommodation & Food Services*. Additional leading employment sectors include *Educational Services and Administrative & Support & Waste Management & Remediation Services*.

New Hires by Industry—2014 Q1

Residents of York County primary source of new employment in 2014 Q1 were *Accommodation and Food Services* followed by *Retail Trade, Professional, Scientific, & Technical Services, & Administrative & Support & Waste Management & Remediation Services* which comprises firms performing routine support activities for the day-to-day operations of other organizations.

New Hires by Industry

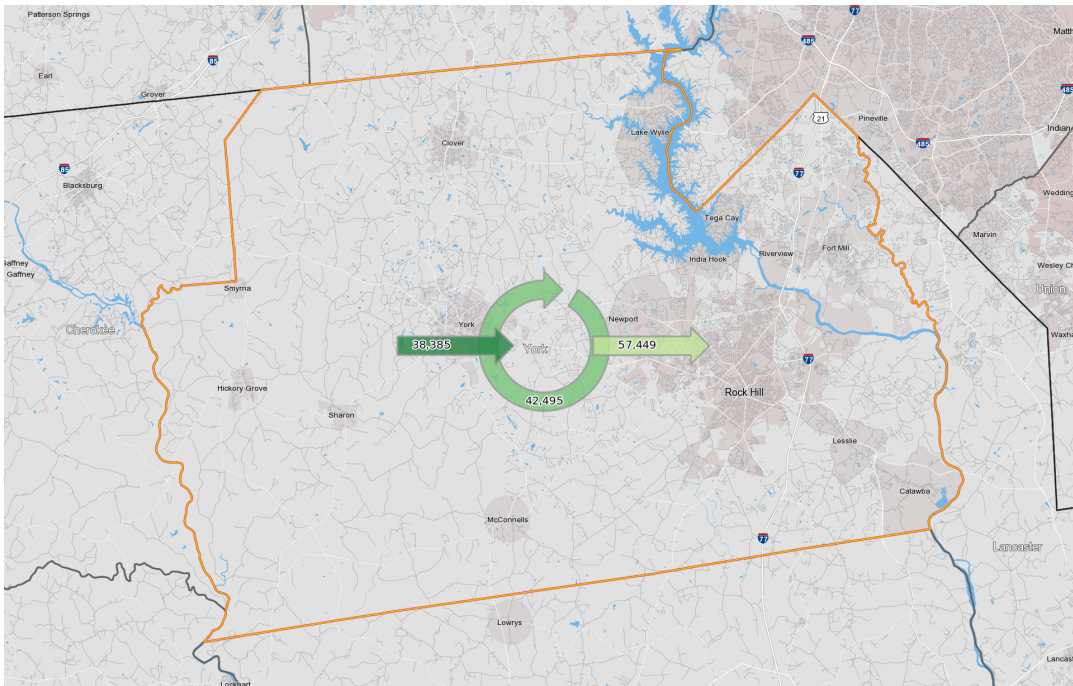
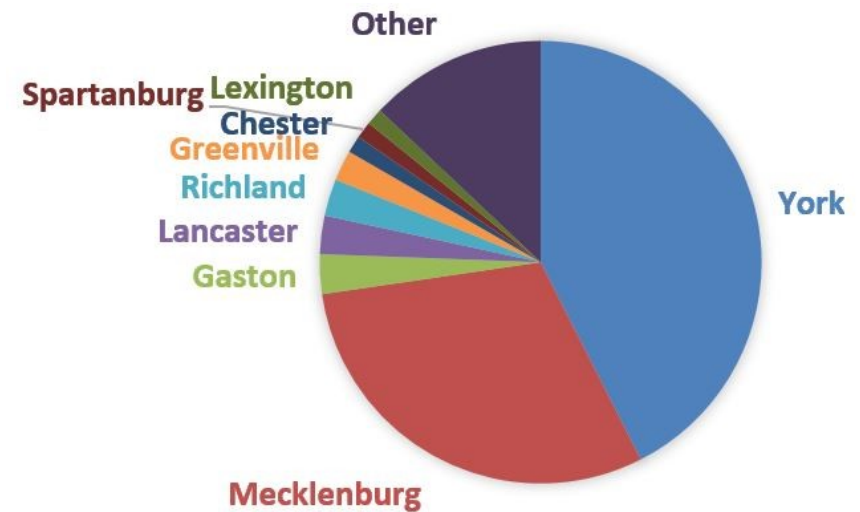


Source: U.S. Census Bureau, Local Employment Dynamics - 2014 Q1

Commuting

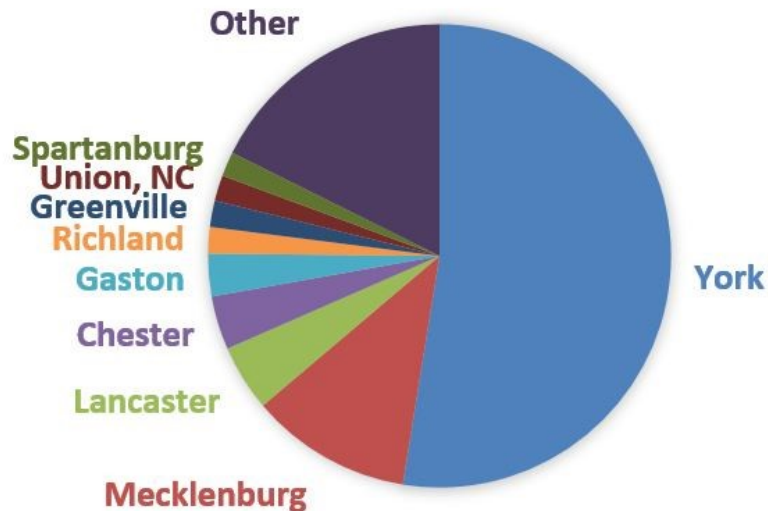
Where do people who live in York County work?

Of the employed residents of York County in 2014: 57,449 commute out of the county for their primary job and 42,495 (42.5%) live and work their primary job in York County. The balance primarily commute to Mecklenburg, NC (30.2%) for their primary job.



Where do people who work in York County live?

Of the primary jobs in York County, 52.5% (42,495) are filled by persons who both live and work in York County. The balance of 38,385 primary jobs are filled by workers commuting into York County largely from Mecklenburg, NC (11.3%) and Lancaster County (4.6%).



County	Share
York	52.5%
Mecklenburg	11.3%
Lancaster	4.6%
Chester	3.7%
Gaston	3.0%
All Other Counties	24.9%

County	Share
York	42.5%
Mecklenburg	30.2%
Gaston	2.9%
Lancaster	2.8%
Richland	2.7%
All Other Counties	18.9%



Document produced by

Catawba Regional Council of Governments · 215 Hampton Street · Post Office Box 450 · Rock Hill, South Carolina · 29730

803·327·9041

www.catawbacog.org