



Board of Directors
Quarterly Meeting Agenda

Thursday, August 14, 2025
4:00 p.m.

- | | | |
|-------|------------------------------------------------------------------------------------------|--------------|
| I. | Call to Order / Invocation | Ms. McGriff |
| II. | Consideration of Minutes from the May 22, 2025, COG Board Meeting
<i>(Attachment)</i> | Ms. McGriff |
| III. | Review of FYE25 Internal Financial Statements <i>(Attachments)</i> | Ms. Chitwood |
| IV. | Presentation by the State Energy Office | Ms. Nelums |
| V. | Consideration of Transportation Items – 5310 Rural Transit Grant
Recommendations | Ms. Stahl |
| VI. | Director’s Report: Awards, Recognitions, and Presentations <i>(Attachments)</i> | Mr. Imler |
| VII. | Election of CRCOG Officers and Executive Committee Members | Mr. DeVenny |
| VIII. | Other Business | Mr. Imler |
| IX. | Regional Roundup | Ms. McGriff |
| X. | Adjourn | Ms. McGriff |

CRCOG Board Quarterly Meeting - Agenda Detail

- **Call to Order / Invocation / Consideration of Minutes from the May 22, 2025, COG Board Meeting**

After the Call to Order and Invocation, the minutes from the last Council of Governments quarterly meeting (attached) will be considered for adoption.

- **Review of FYE25 Internal Financial Statements**

Ms. Chitwood will present the FYE25 internally generated year-end financial statements (attached). For FYE25 (6/30/25), total operating revenue before passthroughs was \$3,413,877. Total operating expenses before passthroughs were \$3,036,154, generating a residual operating surplus of \$332,627. Total passthrough revenues and expenses were \$2,515,000. EDA COVID-19 RLF grant revenue was \$804,295. Insured replacement costs (air conditioning units) were \$139,881, and the transfer to CRDC for the parking lot improvements was \$49,650, bringing the Council's total residual revenues (net income) to \$992,487 for FY25. As a result, the Council's total fund balances increased from \$20,211,890 at FYE24 to \$21,495,612 at FYE25.

- **Presentation by the State Energy Office**

Ms. Nelums with the State Energy Office (SEO) in the South Carolina Office of Regulatory Staff will present information about the SEO programs and solicit feedback on how to best support local governments and public entities.

- **Consideration of Transportation Items – 5310 Rural Transit Grant Recommendations**

Ms. Stahl will present Section 5310 Transit Grant rankings and recommendations from the Transit Grant Committee. Section 5310 grant funds are used to purchase vehicles for transit programs operating throughout the region. The Board will then consider these recommendations.

- **Director's Report: Awards, Recognitions, and Presentations**

Mr. Imler will provide a brief update regarding recent awards, recognitions, and presentations. Attached are two press releases regarding recent NADO Aliceann Wohlbruck Impact Awards.

- **Election of CRCOG Officers and Executive Committee Members**

The Nominating Committee will present its nomination slate for FY26-28 officers and at-large Executive Committee members. At that time, the election of the Chair, Vice Chair, and three at-large Executive Committee members will be held. Then, the COG Board members present from each of the four counties will caucus and select a county representative to serve on the Executive Committee.

- **Other Business**

Ms. Chitwood will provide information about the upcoming SC COGs Annual Training Conference, which will be held on November 23 – 25, 2025, at the Embassy Suites at Kingston Plantation in Myrtle Beach, SC. All Council Board members are invited and encouraged to attend.

- **Regional Roundup**

A representative from each county will be asked to identify a key initiative or activity underway in his or her respective county.

- **Adjourn**

CATAWBA REGIONAL COUNCIL OF GOVERNMENTS
BOARD OF DIRECTORS
REGULAR MEETING

Catawba Regional Center
Rock Hill, South Carolina
May 22, 2025

A regular meeting of the Catawba Regional Council of Governments Board of Directors was called to order at 4:07 p.m. on Thursday, May 22, 2025. Notice of the meeting was sent to the local newspaper and posted on the Council's website.

Note: As a quorum of the Board was not met due to the absence of several Board members who had last minute conflicts, all motions included in these minutes will be re-affirmed by the adoption of these minutes at the COG's August Board meeting.

The following members were present:

Chester

John Agee
Joe Branham, Vice-Chair

Lancaster

Sean Corcoran
Alston DeVenny
Charlene McGriff, Chair

Union

Phillip Russell II
Harold E. Thompson
Leroy Worthy

York

Debi Cloninger (Zoom)
Watts Huckabee (Zoom)
Tom Hyslip (Zoom)
Bo Legg (Zoom)
Laura Ullrich (Zoom)
Chad Williams (Zoom)

The following members were absent:

Chester

Nettie Archie
Randy Ligon
Carlos Williams

Union

Doug Gilliam
Ernest Moore

Lancaster

Brian Carnes
Eddie Moore
Brandon Newton
Russell Patrick

York

Dean Faile
Brent Faulkenberry
Mike Fuesser
Todd Lumpkin
Stacey Moore
William Roddey
Guynn Savage

Others present included the following:

Guests

Tom Couch (York County) Yiyun Zou (SCDOT) (Zoom)

Staff

Steve Allen	Randy Imler	Eleanor Mixon
Amy Chitwood	Marty Little	Grazier Rhea

Following the Call to Order and Invocation, a motion was made to approve the minutes of the February 27, 2025, COG Board Meeting. The motion was duly seconded, and the minutes were approved inclusive of a correction regarding the location of a guideshare-funded transportation project.

I. Presentation of the April 30, 2025, (10-month interim) Operating Statement

Ms. Chitwood reviewed the April 30, 2025, (10-month interim) internally generated financial statements. Total year-to-date operating revenue was \$2,908,060, and total operating expenses were \$2,427,634, providing an operating surplus of \$480,426. Passthrough revenues and expenses of \$2,104,463, insured replacement cost from storm damage (air conditioning units) of \$139,881, RLF COVID-19 grant draws of \$804,295, and a transfer to the Catawba Regional Development Corporation for parking lot improvements in the amount of \$49,650 generated total net revenues of \$1,095,190 as of April 30, 2025. The Board received this report as information.

II. Consideration of Transportation Items

Mr. Allen presented the FY 26-27 Rural Planning Work Program (RPWP) amendment. The RPWP must be updated every two years. The RPWP identifies the transportation planning activities and studies to be performed by staff. The document includes a two-year budget. The work program begins in July 2025 and ends in June 2027. The RPWP document was reviewed and recommended to the Executive Committee by the Transportation Advisory Committee at its May 13 meeting.

A motion was made and passed unanimously to approve the FY 26-27 RPWP plan. No second was needed because the recommendation came from the Executive Committee.

Additionally, Mr. Allen reviewed the 2025-2050 Long Range Transportation Plan (LRTP) update, including the financial summary and the funding allocation breakdown by program. The COG must review and update the LRTP at least every five years in coordination with other agencies, such as SCDOT, the Federal Highway Administration (FHWA), the Federal Transit Administration (FTA), and state and local officials in the region. Mr. Allen noted that the COGs and MPOs are working with SCDOT to update the intergovernmental planning agreement between the COGs, MPOs, and SCDOT. The updated agreement will be included in the new LRTP as an appendix. The 2025-2050 LRTP document was reviewed and recommended to the Executive Committee by the Transportation Advisory Committee at its May 13 meeting. Following Board approval, there will be a 30-day public comment period. Once the comment period concludes, the approved RPWP and LRTP will be sent to SCDOT.

A motion was made and passed unanimously to approve the 2025-2050 LRTP update. No second was needed because the recommendation came from the Executive Committee.

III. Consideration of FY26 Program of Work

Mr. Imler presented the Council's proposed FY26 Program of Work (attached), including planning and programmatic work with federal, state, and local governments and agencies.

Community Development

Grants for Infrastructure and Community Improvements: The total Community Development portfolio, inclusive of grants under administration, submitted applications, applications in progress, and Environmental Review Records, is approximately 80 projects for a total grant amount of \$151,775,473 and a total project amount of \$207,456,725. Based on the current federal fiscal climate and the anticipated completion of SCIIP projects through FY26, total grant dollars under administration are projected to decline to ~\$120 million by FYE26. CRCOG has worked to

broaden its grant portfolio by widening the variety of funders with which it works and serving new grantees.

Economic Development

Workforce Development: On behalf of the consortium of counties (Chester, Lancaster, and York), CRCOG administers approximately \$2.2 million of federal workforce (WIOA) funding. These funds are used to operate three SC Works offices and provide training and re-employment services to qualified participants. In the second quarter of program year 2024, the Catawba Region Program's scores exceeded the SC Department of Employment and Workforce (SC DEW) goals in all categories, with the overall program scores for each category (Adult, Dislocated Worker, and Youth) exceeding 100%. SC DEW projected a slight increase in statewide WIOA programmatic funding prior to the recently released Administration budget draft. Given the uncertainty, workforce center costs are being reviewed for FY26 in the three centers. This includes potentially reducing the number of phone lines in centers, eliminating on-site security, and reducing operating hours during low-traffic times.

Business Lending: Inclusive of business loans and brownfields financing, lending assets under management as of March 31, 2025, totaled \$37,166,965. In light of current uncertainty, staff reviewed every loan in the 90+ loan portfolio and identified borrowers with significant Medicaid exposure, international trade exposure / import tariffs, and fundamental financial and / or collateral weakness. One-third of the portfolio is subject to these risks.

Brownfield Assessment and Financing: The SC BEST statewide environmental assessment project, which Catawba Regional has led over the past 18 months, will wrap up in August / September 2025. Seventy-seven environmental assessment reports have been completed or are underway across the state. The Catawba Region's EPA Assessment Grant will continue through 2026. Significant site assessment work will be completed on the Lancaster Mill site and the former York Wastewater Plant.

Regional Workforce Housing Study: New for 2026 is a Regional Workforce Housing Study. This study will target households making 80% to 150% of the Area Median Income. The projected cost for the study is \$250,000, and steady progress is being made toward this goal with both private and public sector investments. The CRCOG FY26 budget includes \$25,000 in project administration costs as CRCOG's contribution to the project.

Government Services

Transportation Planning: The COG continues to provide transportation services in the form of Regional Mobility / Guideshare Planning, Rural Planning Work Program, Transportation Improvement Program, Long Range Transportation Plan, Transportation Alternatives Program, and Transit Planning. SCDOT provides \$125,000 of FHWA and FTA funds, which require a 20% local match (\$31,250). Therefore, the total funding available for transportation planning work is \$156,250 for FY26.

Land Use and Other Planning Services: CRCOG currently has service contracts with 10 towns and cities, 3 counties, 4 school districts, and 2 non-profits. This has been an area of growth for the COG over the past year.

Regional Issues: CRCOG continues to be a resource for and promote advocacy, leadership, and connectivity within the region and beyond. This year, CRCOG worked hard to stay abreast of Charlotte Water's Interbasin Transfer Certificate request to increase its certificate by 33 million gallons per day, which could pull up to an additional 33 million gallons of water from the Catawba-Wateree Basin each day.

Financial Sustainability

As of March 31, 2025, total CRCOG fund balances equaled \$21.4 million while total CRDC net position was \$3.0 million. CRCOG's direct, passthrough, and managed funds for FY25 totaled approximately \$61,521,481. The Return on Local Investment is currently \$65.77:\$1. Since 1971, Catawba Regional has deployed \$567.1 million across the four counties of the region, while member counties have paid a cumulative total of \$8.6 million in dues.

A motion was made, seconded, and unanimously passed to approve the FY26 Program of Work.

IV. Consideration of FY26 General Operating, Special Funds, and Passthrough Budgets

Mr. Imler and Ms. Chitwood reviewed the proposed FY26 budget (attached), noting significant changes from the FY25 revised budget. In FY26, there is a projected drop in the State Aid to Councils of Governments revenue line. Proposed interest income is projected to be lower in FY26 as the COG has used much of its deferred revenue this year. Grants revenue is conservatively projected to be slightly lower in the coming year, partially due to having one less staff member than at the start of FY25. Because the EDA Planning grant has not yet been awarded, staff budgeted a modest \$40,000 for FY26. The EDA Disaster grant was funded in December 2024, and revenue is anticipated to be \$100,000 for the upcoming fiscal year. Technical assistance contract revenue is projected to be approximately the same for FY26 compared to FY25. A slight reduction in lending programs' revenue is anticipated due to possible interest rate decreases on deposits. Workforce revenue is also projected to decrease slightly. Total revenue is expected to be \$3,244,526 in FY26.

Proposed changes in expenses from the revised FY25 budget include an increase in personnel expenses to \$2,775,000, which includes the cost of hiring an additional business lender. All other expenses remain relatively consistent with the revised FY25 budget. Total expenses are expected to be \$3,209,266 for FY26, resulting in projected net revenue of \$35,260.

Regarding passthroughs, the SC BEST program is scheduled to end in FY26, and the EPA Brownfields Assessment grant will wind down toward the end of the fiscal year as well. The only significant addition to passthrough revenues and expenses for FY26 is the regional workforce housing study.

Following discussion, a motion was made to approve the proposed FY26 budget. No second was needed because the motion came from the Executive Committee. The motion to approve the FY26 General Operating, Special Funds, and Passthrough Budget passed unanimously.

V. Announcement of Nominating Committee for Officer / At-Large Executive Committee Member Elections on August 14, 2025

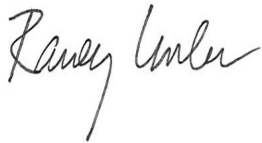
Ms. McGriff indicated that the Nominating Committee for the FY26-28 election cycle is the Executive Committee. Mayor Alston DeVenny will serve as the Nominating Committee chair. The election of the COG Chair, Vice-Chair, and three at-large Executive Committee members will be held at the COG Board meeting in August.

VI. Regional Roundup

Representatives from each county provided brief highlights about projects and activities in their respective cities and counties.

There being no further business, the meeting adjourned at 5:21 p.m.

Respectfully submitted,

A handwritten signature in black ink, appearing to read "Randy Imler", written in a cursive style.

Randy Imler
Executive Director

Fiscal Year 2026 Program of Work



**Catawba
Regional**
Council of Governments



Our Mission

- **Grow the Economy**
- **Plan for the Region's Future**
- **Support our Region's Cities and Counties**
- **Encourage Collaboration on Regional Issues**
- **Celebrate Impact and Financial Sustainability**

What We Do



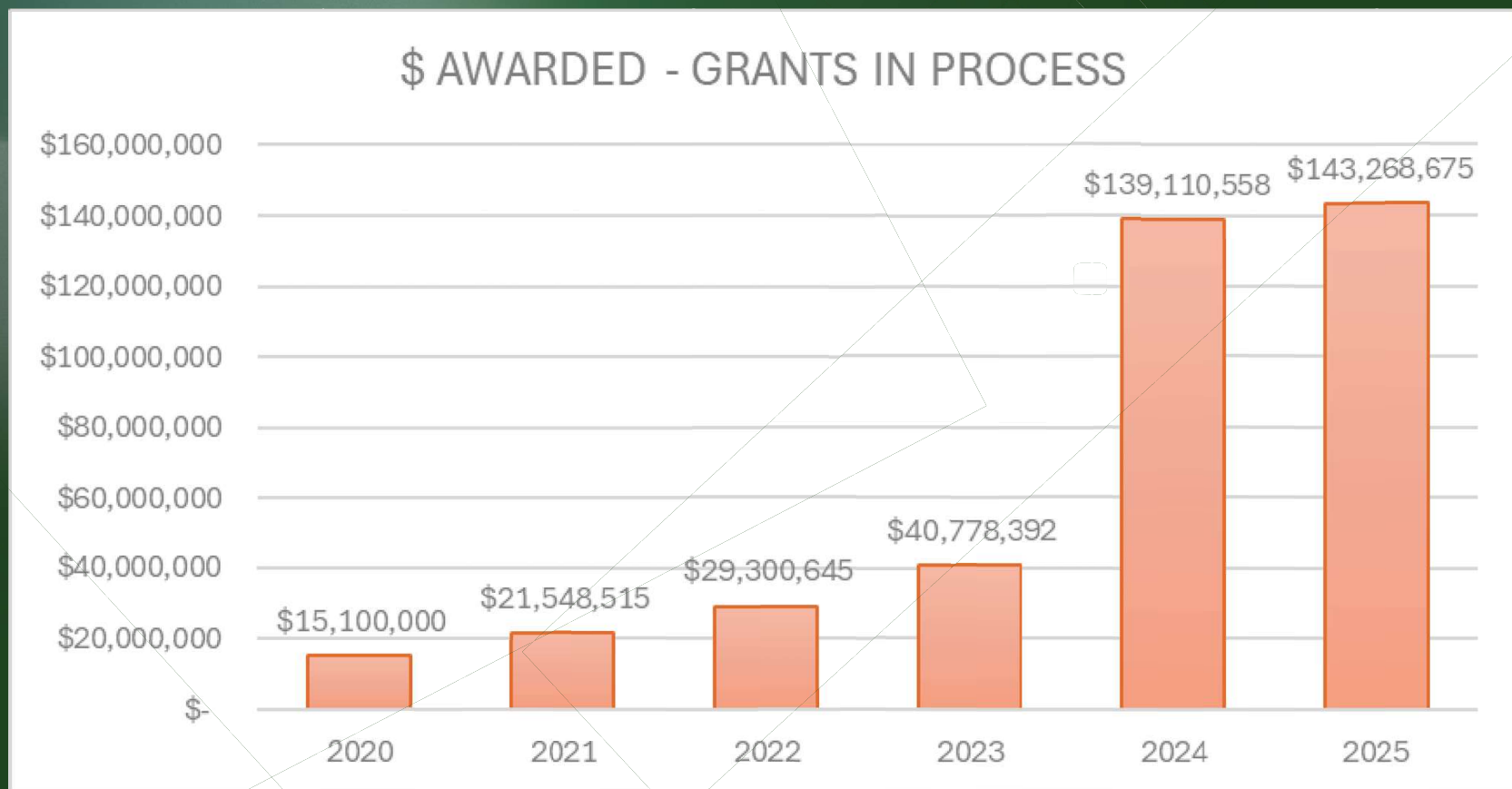
- **Economic Development:**
Growing the economy through workforce training, capital formation, and redevelopment
- **Community Development:**
Infrastructure and community improvements
- **Government Services:**
Rural Transportation Planning, GIS, Technical Assistance, Project Work, Regional Coordination/Collaboration

“There is nothing permanent except change.”
-Heraclitus




Community Development

Infrastructure and Community Improvement Projects



Community Development

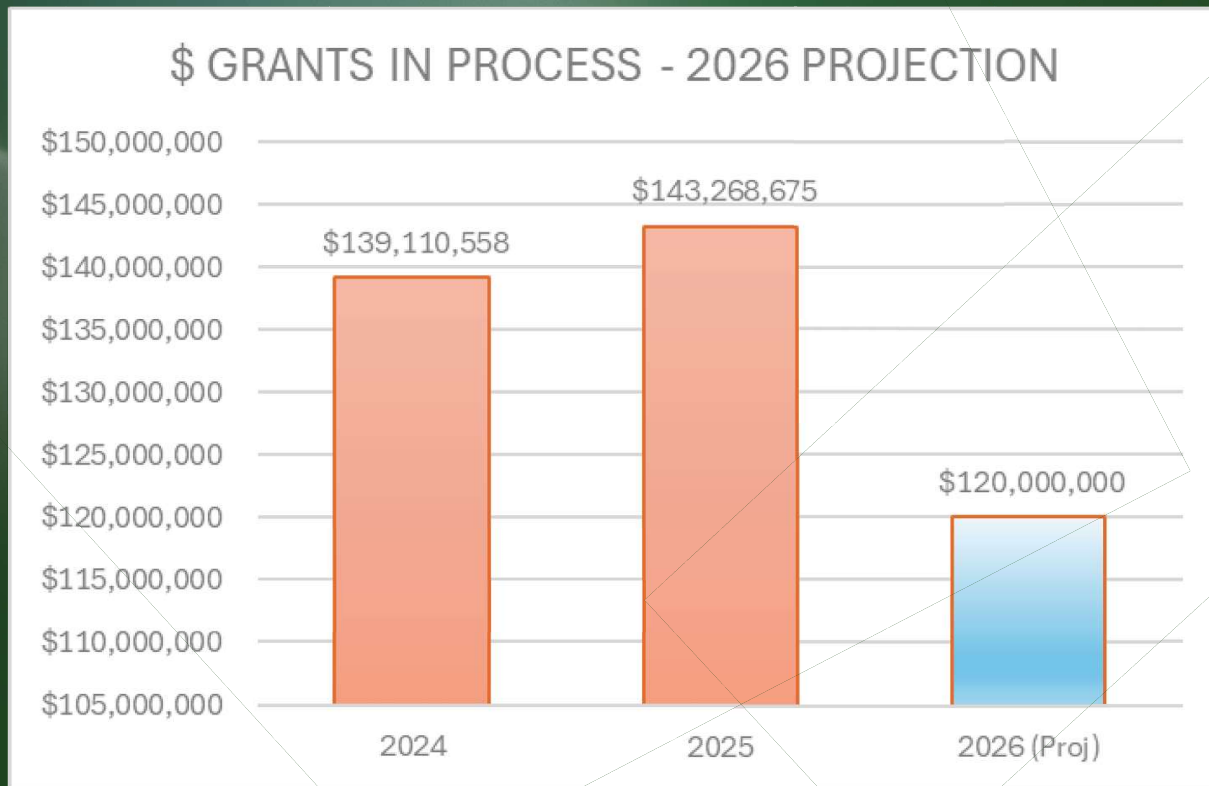
Infrastructure and Community Improvement Projects



	<u># of Grants</u>	<u>Grant Amount</u>	<u>Total Project Amount</u>
Grants Projects Awarded/In Process	62	\$143,268,675	\$198,213,243
Grant Applications Submitted	11	\$7,286,798	\$9,223,482
Grant Applications in Process	3	\$1,200,000	N/A
Environmental Review Records (ERR)	4	\$20,000	\$20,000
Total Community Development Portfolio:	80	\$151,775,473	\$207,456,725

Community Development

Infrastructure and Community Improvement Projects



FY26 projection based upon current federal fiscal climate and completion of SCIIP projects through FY26.

CRCOG has worked to broaden its grants portfolio:

- wider variety of funders (ARC, SCRC, EPA, PHMSA)
- new grantees using CRCOG services

“We can’t be afraid of change. You may feel very secure in the pond that you are in, but if you never venture out of it, you will never know that there is such a thing as an ocean, a sea.” – C. JoyBell C.



Economic Development

Workforce Training with WIOA Funds in the Catawba Region

● WIOA Impacts

2,230 staff-assisted
program completers
in last rolling 4-quarters
(program year)

● Employment Success

71.4% employed in the
2nd qtr. after exiting the
program; Avg.
quarterly earnings:
\$11,856 (~\$47,424/yr.)

● Economic Impact

Total estimated
annual earnings for
employed
participants:
\$75,497,228

On behalf of a the consortium of counties (Chester, Lancaster, York), CRCOG administers ~\$2.2 million of federal workforce (WIOA) funding. These funds are used to:

- Operate three SC Works offices
- Provide training and re-employment services to qualified participants

Program year 2024 - 2nd Quarter Adult/DW/Youth Performance Summary Rolling-4

Catawba

Indicator/Program	Title I Adult Goal	Title I Adult Actual	Title I Adult % of Goal	Title I DW Goal	Title I DW Actual	Title I DW % of Goal	Title I Youth Goal	Title I Youth Actual	Title I Youth % of Goal	Overall Indicator Score
Employment Rate Q2	82.5	75.8	91.9%	88.8	79.6	89.6%	81.0	80.0	98.8%	93.4%
Employment Rate Q4	80.6	77.0	95.5%	87.5	80.0	91.4%	80.8	82.4	102.0%	96.3%
Median Earnings	\$7,390	\$8,356	113.1%	\$8,742	\$9,750	111.5%	\$4,800	\$6,489	135.2%	119.9%
Credential Rate	65.4	78.7	120.3%	69.1	81.0	117.2%	55.1	58.3	105.8%	114.5%
Measurable Skill Gains	68.0	76.8	112.9%	68.1	68.4	100.4%	65.0	69.4	106.8%	106.7%
	Overall Program Score		106.8%	Overall Program Score		102.1%	Overall Program Score		109.7%	

Economic
Development
Workforce Training/WIOA

The Catawba Region's Program Scores:

106.8%

Adult

102.1%

Dislocated
Worker

109.7%

Youth

Economic Development

Workforce Training/WIOA



Job Fairs

- Job Fair of the Carolinas – Carowinds – May 6, 2025
- 595 Job Seekers
- 25 SC Employers

Business Benefits

- Rapid Response Incumbant Worker Training
- Apprenticeships
- On the Job Training (OJT)

SC DEW projected a slight increase in statewide WIOA programmatic funding prior to the recently released Administration budget draft.

Given the uncertainty, workforce center costs are being reduced for FY26 in all three centers: # of phone lines, elimination of on-site security, reduced operating hours, etc.

Economic Development

Business Loans and Brownfields Financing

LENDING ASSETS UNDER MANAGEMENT - 3/31/25

Legacy (Defederalized) RLF		\$7,856,340
EDA COVID-19 RLF		\$11,442,435
EDA Agribusiness RLF		\$833,865
USDA Intermediary Relending Program		\$1,610,822
Lower Savannah RLF		\$1,107,039
SBA 504 Debentures		\$6,176,693
Brownfields (SC DES) RLF		<u>\$8,139,771</u>
		\$37,166,965



In light of current uncertainty, staff has reviewed every loan in our 90+ loan portfolio and identified borrowers with:

- Significant Medicaid Exposure
- International Trade Exposure/Import Tariffs
- Fundamental Financial and/or Collateral Weakness
- 1/3 of the Portfolio is subject to these risks

Economic Development Brownfields Assessments



Regional Assessments to Date

<u>Sites</u>	<u>County</u>	<u>Site Assessment Work</u>
• Eureka Mill*, Lowrys Service Station, Former Post Office, Former Filling Station, Great Falls Rail Trail	Chester	SS QAPP Phase I ESA Phase II ESA VCC Application ABCA Asbestos & Lead Paint Survey Hazardous Material Survey Petroleum Determination Ground Penetrating Radar Survey Seismic Survey
• Springs Mill Administration Building and Lancaster Mill Site*, Town of Heath Springs Park	Lancaster	
• Buffalo Mill and Administration Building*, Wellington Leisure Mill Site, Former Jonesville School, Jonesville Industrial Park, Lockhart Town Square, Langley Dry Cleaner	Union	
• Former Wastewater Treatment Plant*	York	

- The SC BEST statewide project will wrap up in the August/September
 - 77 environmental assessment reports completed or underway across the state
- The Catawba Region's EPA Assessment Grant will continue through 2026
 - *Significant site assessment work to be completed on the Lancaster Mill site and the former York Wastewater Plant

Economic Development

NEW for 2026: Regional Workforce Housing Study

- \$250,000 Projected Costs
- Targeted to households making 80%–150% of Area Median Income (AMI)
- Funds budgeted/committed to date = ~\$231,000
 - Counties & Cities
 - Private Sector
 - Non-profit/Special Purpose Districts



- **CRCOG FY26 budget includes project administration of \$25,000**

“It is not the strongest of the species that survive,
nor the most intelligent, but the one most
responsive to change.” -Charles Darwin



Government Services

Transportation Planning

- Regional Mobility/Guideshare Planning – Project and Corridor Identification and Ranking
- Rural Planning Work Program
- Transportation Improvement Program
- Long Range Transportation Plan
- Transportation Alternatives Program (TAP)
- Transit Planning

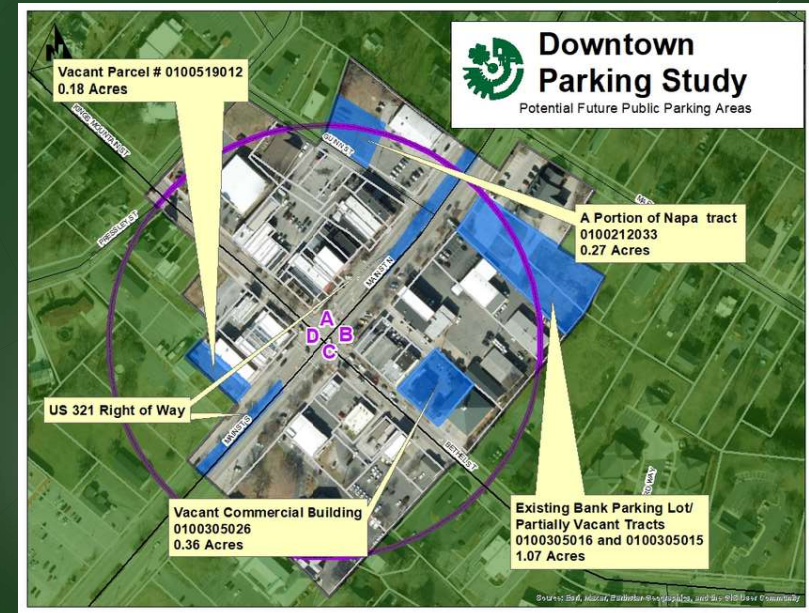
SC DOT provides \$125,000 of FHWA & FTA funds which require a 20% local match (\$31,250) = \$156,250



Government Services

GIS, Land Use Planning, Hazard Mitigation & ADA Planning, School District Projections, Comprehensive Plans, Financial Administration, Davis Bacon Wage Monitoring, Planning Staff, App Development, etc.

- City of Chester
- Chester County
- Chester School District
- Town of Clover
- Town of Fort Mill
- Fort Mill School District
- Town of Kershaw
- City of Lancaster
- City of Rock Hill
- SC Chapter of American Planning Association
- City of Tega Cay
- Rock Hill School District
- City of Union
- Union County
- City of York
- York School District
- Town of Van Wyck
- York County
- Southeast Regional Directors Institute



Service Contracts with: 10 Towns & Cities; 3 Counties; 4 School Districts; 2 Non-profits

Government Services

Resource Advocacy, Leadership, and Connectivity within the region and beyond

- Inter Basin Transfer – Charlotte Water/SC DES/SC Water
- Catawba Wateree Comprehensive Relicensing Agreement Final Agreement Committee (CWCRA-FAC)
- Catawba Wateree Water Management Group – Advisory Committee (CWWMG)
- SC Community Development Association (SCCDA)
- Southeast Regional Directors Institute (SERDI)
- SC Chapter of American Planning Association
- Development Districts of Appalachia (DDAA) – Appalachian Regional Commission (ARC)
- Grow America – Revolving Loan Fund National Peer Advisor
- National Association of Development Organizations (NADO)
- Catawba Regional Forum



Financial Sustainability

CRCOG Summary Balance Sheet (Governmental Funds - 3/31/25) (Excludes GASB Liabilities)

Total Assets	\$22,276,605
Total Liabilities	<u>\$ 880,168</u>
Restricted Fund Balance	\$18,950,644
Unrestricted Fund Balance	\$ 1,428,700
YTD Revenues over Expenses	<u>\$ 1,017,093</u>
Total Fund Balance	\$21,396,437

CRDC Summary Balance Sheet (3/31/25)

Total Assets	\$ 3,560,906
Total Liabilities	<u>\$ 513,850</u>
Net Invest. Capital Assets	\$ 403,419
Restricted Net Position	\$ 1,072,912
Unrestricted Net Position	\$ 1,496,855
YTD Revenues over Expenses	<u>\$ 73,870</u>
Total Net Position	\$ 3,047,056

Total CRCOG Fund Balances = \$21.4 million
Total CRDC Net Position = \$3.0 million

Direct, Passthrough, and Managed Revenues

$\$3,269,526 + \$283,900 = \$3,553,426$	\$2,708,000	$\$143,268,675 / 3 \text{ years} = \$47,765,225$	\$7,494,830	\$61,521,481
Direct Revenues – CRCOG + CRDC	CRCOG Passthrough Revenues (WIOA, EPA Brownfields, SC BEST, Housing Study)	CRCOG Managed Grant Funds (1/3 of outstanding grants)	SC DOT Regional Mobility Guideshare Annual Allocation to CRCOG Region	= Catawba Regional COG and Development Corporation – Total Direct, Indirect, and Managed Revenues

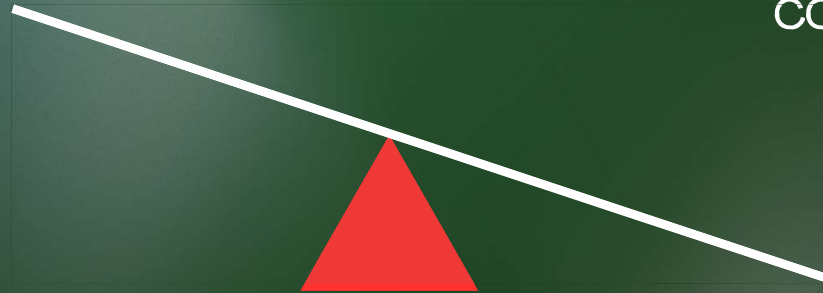
Return on Local Investment: **\$65.77 : \$1**

\$8,623,277
**Cumulative
Local Dues**

Since 1971, Catawba
Regional has deployed
\$567.1 million across the four
counties of the region

Since 1971, member counties
have paid a cumulative total
of \$8.6 million in dues

\$567,151,775
**Cumulative
Capital Deployed**



“Never doubt that a small group of thoughtful, committed citizens can change the world. Indeed, it is the only thing that ever has.” –Margaret Mead



**CATAWBA REGIONAL COUNCIL OF GOVERNMENTS
FY2025 REVISED and FY2026 PROPOSED BUDGET**

Budget Adopted May 22, 2025

	Operating Fund 4/30/2025 COG	Restricted Legacy 4/30/2025 RLF	Restricted COVID 4/30/2025 SCBLF	Restricted 4/30/2025 SCALF	Consolidated (83% of original) 4/30/2025	Revised FY2025 Budget	Consolidated Proposed FY2026
REVENUE							
Participating Local Governments	\$ 208,818	\$ -	\$ -	\$ -	\$ 208,818	\$ 223,293	\$ 225,182
State Aid to Councils of Governments	244,345	-	-	-	244,345	244,344	144,344
Interest and Other Income	52,118	-	-	-	52,118	60,000	45,000
	505,281	-	-	-	505,281	527,637	414,526
Community Development Contracts	202,187	-	-	-	202,187	242,000	230,000
Rural Infrastructure Authority (RIA) Contracts	36,818	-	-	-	36,818	45,000	50,000
SC Infrastructure Investment Program	174,428	-	-	-	174,428	208,000	210,000
EDA Infrastructure Program	41,727	-	-	-	41,727	50,000	35,000
Southeast Crescent Regional Commission	15,231	-	-	-	15,231	19,000	15,000
SRF Infrastructure Program	11,877	-	-	-	11,877	14,000	10,000
ARC Planning Grant and Projects	56,065	-	-	-	56,065	65,000	50,000
Union County ARC Planning Grant Match	9,180	-	-	-	9,180	12,240	10,000
Neighborhood Initiative Program	6,148	-	-	-	6,148	8,000	5,000
	553,661	-	-	-	553,661	663,240	615,000
EDA Planning Grant	53,548	-	-	-	53,548	60,000	40,000
EDA Disaster Grant	12,979	-	-	-	12,979	23,000	100,000
	66,527	-	-	-	66,527	83,000	140,000
Technical Assistance Contracts	347,598	-	-	-	347,598	415,000	425,000
Transportation Planning	85,229	-	-	-	85,229	115,000	125,000
	432,827	-	-	-	432,827	530,000	550,000
EDA Revolving Loan Fund (RLF) - Interest on Loans	-	166,676	-	-	166,676	200,000	190,000
EDA Revolving Loan Fund (RLF) - Interest on Deposits	-	156,419	-	-	156,419	190,000	170,000
EDA - COVID19 RLF - Interest on Loans	-	-	234,915	-	234,915	280,000	290,000
EDA - COVID19 RLF - Interest on Deposits	-	-	127,689	-	127,689	155,000	120,000
SC Agribusiness Loan Fund - Interest on Loans	-	-	-	9,277	9,277	12,000	15,000
SC Agribusiness Loan Fund - Interest on Deposits	-	-	-	28,465	28,465	35,000	25,000
Other Loan Funds	17,313	-	-	-	17,313	20,000	15,000
Intermediary Relending Program	19,168	-	-	-	19,168	20,000	20,000
Regional Development Corporation	99,097	-	-	-	99,097	110,000	115,000
Brownfields Revolving Loan Fund	97,052	-	-	-	97,052	118,000	115,000
EPA Brownfields Assessment Contract	16,251	-	-	-	16,251	20,000	20,000
	248,881	323,095	362,604	37,742	972,322	1,160,000	1,095,000
Workforce - WIOA	377,442	-	-	-	377,442	450,000	430,000
TOTAL REVENUE	\$ 2,184,619	\$ 323,095	\$ 362,604	\$ 37,742	\$ 2,908,060	\$ 3,413,877	\$ 3,244,526

CATAWBA REGIONAL COUNCIL OF GOVERNMENTS
FY2025 REVISED and FY2026 PROPOSED BUDGET

	Operating Fund 4/30/2025 COG	Restricted Legacy 4/30/2025 RLF	Restricted COVID 4/30/2025 SCBLF	Restricted 4/30/2025 SCALF	Consolidated (83% of original) 4/30/2025	Revised FY2025 Budget	Consolidated Proposed FY2026
OPERATING EXPENSES							
Personnel	\$ 1,646,614	\$ 216,954	\$ 205,149	\$ 14,717	\$ 2,083,434	\$ 2,600,000	\$ 2,775,000
Rent	30,000	-	-	-	30,000	36,000	36,000
Utilities	15,183	-	-	-	15,183	20,000	20,000
Telephone	18,666	630	135	-	19,431	25,000	25,000
Travel and Meetings	48,037	5,245	1,868	-	55,150	70,000	70,000
Office Supplies	25,143	618	1,528	-	27,289	42,000	40,000
Postage	1,760	-	-	-	1,760	3,000	3,000
Memberships, Dues, Publications	14,142	7,451	7,451	726	29,770	35,000	35,000
Maintenance & Service Contracts	9,757	-	-	-	9,757	12,000	12,000
Employee/Board Member Training	11,988	825	-	-	12,813	17,000	15,000
Capital Costs	19,153	-	-	-	19,153	19,154	25,000
Professional Services	23,027	1,957	5,365	25	30,374	40,000	40,000
Audit	23,190	-	-	-	23,190	25,000	25,000
Information Technology Services	49,618	-	-	-	49,618	60,000	62,500
Insurance and Bonding	15,735	643	-	-	16,378	20,000	20,000
Miscellaneous	4,334	-	-	-	4,334	6,000	5,766
TOTAL EXPENSES	1,956,347	234,323	221,496	15,468	2,427,634	3,030,154	3,209,266
EXCESS REVENUE (LOSS) BEFORE OTHER ITEMS	\$ 228,272	\$ 88,772	\$ 141,108	\$ 22,274	\$ 480,426	\$ 383,723	\$ 35,260
WIOA Pass-Thru Revenues	1,761,883	-	-	-	1,761,883	2,100,000	2,000,000
SC BEST DHEC Assessment Grant	248,327	-	-	-	248,327	300,000	350,000
EPA Brownfields Pass-Thru Revenues	94,253	-	-	-	94,253	115,000	158,000
Workforce Housing Study	-	-	-	-	-	-	200,000
WIOA Pass-Thru Expenditures	(1,761,883)	-	-	-	(1,761,883)	(2,100,000)	(2,000,000)
SC BEST DHEC Assessment Grant	(248,327)	-	-	-	(248,327)	(300,000)	(350,000)
EPA Brownfields Pass-Thru Expenditures	(94,253)	-	-	-	(94,253)	(115,000)	(158,000)
Workforce Housing Study	-	-	-	-	-	-	(200,000)
Uninsured Replacement Cost-Storm Damage	-	-	-	-	-	-	-
Insured Replacement Cost-Storm Damage	(139,881)	-	-	-	(139,881)	(139,881)	-
COVID RLF Grant	-	-	804,295	-	804,295	804,295	-
Transfer to RDC - Capital Improvement (parking)	(49,650)	-	-	-	(49,650)	(49,650)	-
EXCESS OF REVENUES OVER EXPENDITURES	\$ 38,741	\$ 88,772	\$ 945,403	\$ 22,274	\$ 1,095,190	\$ 998,487	\$ 35,260

CATAWBA REGIONAL COUNCIL OF GOVERNMENTS
OPERATING STATEMENT
INTERNAL COMPARISON OF BUDGET TO ACTUAL AT 6/30/2025

FYE2025 Actual

	Operating Fund 6/30/2025 COG	Restricted Legacy 6/30/2025 RLF	Restricted COVID 6/30/2025 SCBLF	Restricted 6/30/2025 SCALF	Consolidated 6/30/2025	Consolidated BUDGET FY2025	% 100.00%	Consolidated Budget FY2026
REVENUE								
Participating Local Governments	\$ 223,293	\$ -	\$ -	\$ -	\$ 223,293	\$ 223,293	100	\$ 225,182
State Aid to Councils of Governments	244,344	-	-	-	244,344	244,344	100	144,344
Interest and Other Income	63,585	-	-	-	63,585	60,000	106	45,000
Total Local, State Aid, and Other	531,222	-	-	-	531,222	527,637	101	414,526
Community Development Contracts	240,435	-	-	-	240,435	242,000	99	230,000
Rural Infrastructure Authority (RIA) Contracts	45,406	-	-	-	45,406	45,000	101	50,000
SC Infrastructure Investment Program	211,657	-	-	-	211,657	208,000	102	210,000
EDA Infrastructure Project	42,628	-	-	-	42,628	50,000	85	35,000
Southeast Crescent Regional Commission	20,013	-	-	-	20,013	19,000	105	15,000
SRF Infrastructure Projects	14,172	-	-	-	14,172	14,000	101	10,000
ARC Planning Grant and Projects	75,192	-	-	-	75,192	65,000	116	50,000
Union County ARC Planning Grant Match	12,240	-	-	-	12,240	12,240	100	10,000
Neighborhood Initiative Program	7,139	-	-	-	7,139	8,000	89	5,000
Total Community and Economic Development Grants	668,882	-	-	-	668,882	663,240	101	615,000
Technical Assistance Contracts	445,369	-	-	-	445,369	415,000	107	425,000
EDA Planning Grant	59,277	-	-	-	59,277	60,000	99	40,000
EDA Disaster Grant	27,528	-	-	-	27,528	23,000	120	100,000
Transportation Planning	105,740	-	-	-	105,740	115,000	92	125,000
Total Planning and Technical Assistance Revenue	637,914	-	-	-	637,914	613,000	104	690,000
EDA Revolving Loan Fund (RLF) - Interest on Loans	-	201,501	-	-	201,501	200,000	101	190,000
EDA Revolving Loan Fund (RLF) - Interest on Deposits	-	191,518	-	-	191,518	190,000	101	170,000
EDA - COVID19 RLF - Interest on Loans	-	-	291,480	-	291,480	280,000	104	290,000
EDA - COVID19 RLF - Interest on Deposits	-	-	154,409	-	154,409	155,000	100	120,000
SC Agribusiness Loan Fund - Interest on Loans	-	-	-	9,724	9,724	12,000	81	15,000
SC Agribusiness Loan Fund - Interest on Deposits	-	-	-	34,591	34,591	35,000	99	25,000
Other Loan Funds	21,920	-	-	-	21,920	20,000	110	15,000
Intermediary Relending Program	21,966	-	-	-	21,966	20,000	110	20,000
Regional Development Corporation	119,685	-	-	-	119,685	110,000	109	115,000
Brownfields Revolving Loan Fund	113,031	-	-	-	113,031	118,000	96	115,000
EPA Brownfields Assessment Contract	19,023	-	-	-	19,023	20,000	95	20,000
Total Lending and Brownfields Revenue	295,625	393,019	445,889	44,315	1,178,848	1,160,000	102	1,095,000
Workforce - WIOA	448,040	-	-	-	448,040	450,000	100	430,000
TOTAL REVENUE	\$ 2,581,683	\$ 393,019	\$ 445,889	\$ 44,315	\$ 3,464,906	\$ 3,413,877	101	\$ 3,244,526

CATAWBA REGIONAL COUNCIL OF GOVERNMENTS
OPERATING STATEMENT
INTERNAL COMPARISON OF BUDGET TO ACTUAL AT 6/30/2025

	Operating Fund 6/30/2025 COG	Restricted Legacy 6/30/2025 RLF	Restricted COVID 6/30/2025 SCBLF	Restricted 6/30/2025 SCALF	Consolidated 6/30/2025	Consolidated BUDGET FY2025	% 100.00%	Consolidated Budget FY2026
OPERATING EXPENSES								
Personnel	\$ 1,986,901	\$ 272,416	\$ 259,114	\$ 18,815	\$ 2,537,246	\$ 2,600,000	98	\$ 2,775,000
Rent	36,000	-	-	-	36,000	36,000	100	36,000
Utilities	17,276	-	-	-	17,276	20,000	86	20,000
Telephone	23,132	630	450	-	24,212	25,000	97	25,000
Travel and Meetings	62,990	10,400	2,999	-	76,389	70,000	109	70,000
Office Supplies	35,407	2,244	2,338	-	39,989	45,000	89	40,000
Postage	2,297	-	-	-	2,297	3,000	77	3,000
Memberships, Dues, Publications	18,729	7,935	7,935	968	35,567	35,000	102	35,000
Maintenance & Service Contracts	11,551	-	-	-	11,551	15,000	77	12,000
Employee/Board Member Training	13,328	825	-	-	14,153	17,000	83	15,000
Capital Costs	19,154	-	-	-	19,154	19,154	100	25,000
Professional Services	17,927	4,332	5,383	25	27,667	40,000	69	40,000
Audit	23,190	-	-	-	23,190	25,000	93	25,000
Information Technology Services	63,493	-	-	-	63,493	60,000	106	62,500
Insurance and Bonding	19,561	771	-	-	20,332	20,000	102	20,000
Miscellaneous	4,982	-	-	-	4,982	6,000	83	5,766
TOTAL EXPENSES	2,355,918	299,553	278,219	19,808	2,953,498	3,036,154	97	3,209,266
EXCESS REVENUE (LOSS) BEFORE OTHER ITEMS	\$ 225,765	\$ 93,466	\$ 167,670	\$ 24,507	\$ 511,408	\$ 332,627		\$ 35,260
WIOA Pass-Thru Revenues	2,070,058	-	-	-	2,070,058	2,100,000	99	2,000,000
SC BEST DHEC Assessment Grant	325,132	-	-	-	325,132	300,000	108	350,000
EPA Brownfields Pass-Thru Revenues	94,772	-	-	-	94,772	115,000	82	158,000
Workforce Housing Study	-	-	-	-	-	0	0	200,000
COVID RLF Grant	-	-	804,295	-	804,295	804,295	100	-
Total Pass-Thru Revenues and Other Revenues	\$ 2,489,962	\$ -	\$ 804,295	\$ -	\$ 2,489,962	\$ 3,319,295	75	\$ 2,708,000
WIOA Pass-Thru Expenditures	(2,070,058)	-	-	-	(2,070,058)	(2,100,000)	99	(2,000,000)
SC BEST DHEC Assessment Grant	(325,132)	-	-	-	(325,132)	(300,000)	108	(350,000)
EPA Brownfields Pass-Thru Revenues	(94,772)	-	-	-	(94,772)	(115,000)	82	(158,000)
Workforce Housing Study	-	-	-	-	-	-	0	(200,000)
Insured Replacement Costs - Storm Damage	(139,881)	-	-	-	(139,881)	(139,881)	100	-
Transfer to RDC - Capital Improvement	(49,650)	-	-	-	(49,650)	(49,650)	100	-
Total Pass-Thru and Other Expenditures	(2,679,493)	-	-	-	(2,679,493)	(2,704,531)	99	(2,708,000)
EXCESS OF REVENUES OVER EXPENDITURES	\$ 36,234	\$ 93,466	\$ 971,965	\$ 24,507	\$ 1,126,172	\$ 992,487		\$ 35,260

CATAWBA REGIONAL COUNCIL OF GOVERNMENTS
STATEMENTS OF FUND BALANCES
DRAFT/UNAUDITED
June 30, 2025

ASSETS

	CRCOG	RLF	SCBLF	SCALF	CONSOLIDATED
Current Assets					
Cash - Checking	\$ 387,222	\$ 278,121	\$ 361,672	\$ 133,231	\$ 1,299,411
Cash - Savings	1,083,997	3,883,165	3,215,959	654,436	8,837,557
Prepaid Expenses	23,206		-	-	23,206
Receivables	586,953	7,378	13,168	34	607,533
Receivables - WIOA	37,808	-	-	-	37,808
	<u>2,119,186</u>	<u>4,168,664</u>	<u>3,590,799</u>	<u>787,701</u>	<u>10,666,350</u>
Non-Current Assets					
Restricted Loans Receivable, net	-	3,439,206	7,838,544	214,642	11,492,392
TOTAL ASSETS	<u>\$ 2,119,186</u>	<u>\$ 7,607,870</u>	<u>\$ 11,429,343</u>	<u>\$ 1,002,343</u>	<u>\$ 22,158,742</u>

LIABILITIES

Current Liabilities					
Accounts Payable/PR W/H	\$ 21,552	\$ 34,011	\$ 29,428	\$ 1,571	\$ 86,562
Deferred Revenue	496,437	-	-	-	496,437
Accrued Annual Leave	80,131	-	-	-	80,131
TOTAL LIABILITIES	<u>\$ 598,120</u>	<u>\$ 34,011</u>	<u>\$ 29,428</u>	<u>\$ 1,571</u>	<u>\$ 663,130</u>

FUND BALANCE

FUND BALANCE					
Restricted fund balance	43,206	7,480,393	10,427,950	976,265	18,927,814
Unrestricted fund balance	<u>1,441,626</u>	<u>-</u>	<u>-</u>	<u>-</u>	<u>1,441,626</u>
Total fund balance	1,484,832	7,480,393	10,427,950	976,265	20,369,440
Current revenues in excess of expend.	<u>36,234</u>	<u>93,466</u>	<u>971,965</u>	<u>24,507</u>	<u>1,126,172</u>
Total Fund Balance	1,521,066	7,573,859	11,399,915	1,000,772	21,495,612
TOTAL LIABILITIES & FUND BALANCE	<u>\$ 2,119,186</u>	<u>\$ 7,607,870</u>	<u>\$ 11,429,343</u>	<u>\$ 1,002,343</u>	<u>\$ 22,158,742</u>

CATAWBA REGIONAL COUNCIL OF GOVERNMENTS
CONSOLIDATED INCOME AND EXPENSE STATEMENT
DRAFT/UNAUDITED
June 30, 2025

	<u>COG</u>	<u>RLF</u>	<u>SCBLF</u>	<u>SCALF</u>	<u>CONSOLIDATED</u>
REVENUE					
Participating Local Governments	\$ 223,293	\$ -	\$ -	\$ -	\$ 223,293
State Aid to Councils of Governments	244,344	-	-	-	244,344
Interest and Other Income	63,585	200,105	154,409	34,591	452,690
Workforce - WIA/WIOA	448,040	-	-	-	448,040
Community Development-CDBG/HUD/RIA	285,841	-	-	-	285,841
ARC Planning and Match	87,432	-	-	-	87,432
Southeast Crescent Regional Commission	20,013	-	-	-	20,013
SC Infrastructure Investment Program	211,657	-	-	-	211,657
EDA/SRF Infrastructure Projects	56,800	-	-	-	56,800
Technical Assistance Contracts	445,369	-	-	-	445,369
Transportation Planning	105,740	-	-	-	105,740
Other Loan Funds	21,920	-	-	-	21,920
Intermediary Relending Program	21,966	-	-	-	21,966
Regional Development Corporation	119,685	-	-	-	119,685
EDA Planning Grant	59,277	-	-	-	59,277
EDA Disaster Grant	27,528	-	-	-	27,528
Brownfields Revolving Loan Fund	113,031	-	-	-	113,031
Neighborhood Initiative Program	7,139	-	-	-	7,139
EPA Brownfields Assessment Contract	19,023	-	-	-	19,023
EDA Revolving Loan Fund (RLF)	-	192,914	-	-	192,914
EDA SC Agribusiness Loan Fund	-	-	-	9,724	9,724
EDA Revolving Loan Fund (RLF) - COVID19	-	-	291,480	-	291,480
TOTAL REVENUE BEFORE PASS-THRU	<u>\$ 2,581,683</u>	<u>\$ 393,019</u>	<u>\$ 445,889</u>	<u>\$ 44,315</u>	<u>\$ 3,464,906</u>
OPERATING EXPENSES					
Personnel	\$ 1,986,901	\$ 272,416	\$ 259,114	\$ 18,815	\$ 2,537,246
Rent & Maintenance	36,000	-	-	-	36,000
Utilities	17,276	-	-	-	17,276
Telephone	23,132	630	450	-	24,212
Travel and Meetings	62,990	10,400	2,999	-	76,389
Office Supplies	35,407	2,244	2,338	-	39,989
Postage	2,297	-	-	-	2,297
Memberships, Dues, Publications	18,729	7,935	7,935	968	35,567
Maintenance & Service Contracts	11,551	-	-	-	11,551
Employee/Board Member Training	13,328	825	-	-	14,153
Capital Costs	19,154	-	-	-	19,154
Professional Services	17,927	4,332	5,383	25	27,667
Audit	23,190	-	-	-	23,190
Information Technology Services	63,493	-	-	-	63,493
Insurance and Bonding	19,561	771	-	-	20,332
Miscellaneous	4,982	-	-	-	4,982
TOTAL EXPENSES	<u>2,355,918</u>	<u>299,553</u>	<u>278,219</u>	<u>19,808</u>	<u>2,953,498</u>
NET INCOME (LOSS) BEFORE OTHER ITEMS	<u>\$ 225,765</u>	<u>\$ 93,466</u>	<u>\$ 167,670</u>	<u>\$ 24,507</u>	<u>\$ 511,408</u>
WIOA Pass-Thru Revenues	2,070,058	-	-	-	2,070,058
SC BEST DHEC Assessment Grant	325,132	-	-	-	325,132
EPA Brownfields Pass-Thru Revenues	94,772	-	-	-	94,772
WIOA Pass-Thru Expenditures	(2,070,058)	-	-	-	(2,070,058)
SC BEST DHEC Assessment Grant	(325,132)	-	-	-	(325,132)
EPA Brownfields Pass-Thru Revenues	(94,772)	-	-	-	(94,772)
Loan Match/EDA Grant	-	-	804,295	-	804,295
Insured Replacement Costs - Storm Damage	(139,881)	-	-	-	(139,881)
Transfer to RDC	(49,650)	-	-	-	(49,650)
NET INCOME (LOSS)	<u>\$ 36,234</u>	<u>\$ 93,466</u>	<u>\$ 971,965</u>	<u>\$ 24,507</u>	<u>\$ 1,126,172</u>

FOR IMMEDIATE RELEASE

CONTACT:

Marty Little, AICP
Senior Planner
mlittle@catawbacog.org



***Catawba Regional Council of Governments Honored with
2025 Impact Award from the National Association of Development Organizations***

July 15, 2025 – Catawba Regional Council of Governments, based in Rock Hill, South Carolina, has recently been recognized with a 2025 Aliccann Wohlbruck Impact Award from the National Association of Development Organizations (NADO) for the Chester County Emergency Response GIS Application.

The Chester County Emergency Response Application, developed in partnership with the Chester County Emergency Management Agency, is a GIS-based mobile and web tool that enhances real-time situational awareness and coordination across 10 agencies for over 30 types of emergency incidents. Funded entirely by local resources, the application has been instrumental in responding to 11 documented emergencies, most notably during Hurricane Helene in 2024, where it facilitated the collection of critical field data and improved response efficiency. Catawba Regional Council of Governments led the technical development, training, and ongoing support, while the project's success was made possible through collaboration with local law enforcement, fire services, EMS, schools, healthcare providers, and state agencies. This innovative tool not only strengthens emergency response but also supports long-term regional resilience and economic stability by informing infrastructure planning and minimizing disruption during crises.

Presented annually, the [NADO Impact Awards](#) honor regional development organizations and their partners for strengthening communities, building regional resilience, and enhancing local economies through innovative approaches to economic and community development. NADO is a Washington, DC-based membership association of regional development organizations that promotes programs and policies that strengthen local governments, communities, and economies.

This year's cohort included 90 impactful projects led by 79 organizations across 24 states. These award-winning efforts will be recognized during [NADO's 2025 Annual Training Conference](#), held this coming October in Salt Lake City, Utah. All selected projects are featured in an interactive StoryMap that showcases summaries, images, and key partners. The map is available at www.nado.org/2025impactawards/.

"The Impact Awards are an annual reminder of the creativity and commitment that regional development organizations bring to their communities," said 2024-2025 NADO President Rick Hunsaker, Executive Director of the Region XII Council of Governments in Iowa. "This year's awardees show how local and regional partnerships, driven by vision and collaboration, can lead to lasting positive change across our country."

"We are excited to share and promote some of the great projects in partnership with our localities, and we are pleased that our peers and NADO have recognized this work," said Randy Imler, Executive Director of Catawba Regional COG. "This GIS application continues to grow and demonstrate tangible impact throughout Chester County and our greater region."

The Impact Awards are presented in memory of Aliccann Wohlbruck, NADO's first executive director, who was a lifelong advocate for regional solutions and rural economic development.

For more information, contact Marty Little at (803) 327-9041 or mlittle@catawbacog.org.

About Catawba Regional Council of Governments

Catawba Regional Council of Governments (COG) is an association of South Carolina local governments in Chester, Lancaster, Union, and York counties. The COG serves as a forum for intergovernmental cooperation and as a central staffing resource for grantsmanship, land use and transportation planning, community and economic development, workforce development, GIS mapping, environmental initiatives, information systems, and project management.

About NADO

The National Association of Development Organizations (NADO) promotes public policies that strengthen local governments, communities, and economies through the regional strategies, coordination efforts, and program expertise of the nation's regional development organizations. Learn more about NADO at www.nado.org.

FOR IMMEDIATE RELEASE

CONTACT:

Erica Stahl, AICP
Senior Planner
estahl@catawbacog.org

Eleanor Mixon
Community Development Planner
emixon@catawbacog.org



Catawba Regional Council of Governments Honored with 2025 Impact Award from the National Association of Development Organizations

July 15, 2025 – Catawba Regional Council of Governments (COG), based in Rock Hill, South Carolina, has recently been recognized with a 2025 Aliceann Wohlbruck Impact Award from the National Association of Development Organizations (NADO) for the Jonesville Streetscape Project.

The Town of Jonesville Streetscape Improvements Project revitalized the town's distressed downtown by enhancing pedestrian safety, accessibility, and aesthetics through new ADA-compliant sidewalks, curbing, crosswalks, lighting, and landscaping, all aimed at promoting economic development and community connectivity. Funded through a mix of federal, state, and local sources, the project was completed in two phases, with Phase I completed and Phase II in planning. The Catawba Regional Council of Governments led grant applications and project administration, ensuring compliance and coordination. The improvements have made downtown more accessible for seniors, families, and residents with disabilities; encouraged physical activity; improved property values; and positioned the area for future investment and tourism, all while aligning with the region's Comprehensive Economic Development Strategy.

Presented annually, the [NADO Impact Awards](#) honor regional development organizations and their partners for strengthening communities, building regional resilience, and enhancing local economies through innovative approaches to economic and community development. NADO is a Washington, DC-based membership association of regional development organizations that promotes programs and policies that strengthen local governments, communities, and economies.

This year's cohort included 90 impactful projects led by 79 organizations across 24 states. These award-winning efforts will be recognized during [NADO's 2025 Annual Training Conference](#), held this coming October in Salt Lake City, Utah. All selected projects are featured in an interactive StoryMap that showcases summaries, images, and key partners. The map is available at www.nado.org/2025impactawards/.

"The Impact Awards are an annual reminder of the creativity and commitment that regional development organizations bring to their communities," said 2024-2025 NADO President Rick Hunsaker, Executive Director of the Region XII Council of Governments in Iowa. "This year's awardees show how local and regional partnerships, driven by vision and collaboration, can lead to lasting positive change across our country."

"We are excited to share and promote some of the great projects occurring in our localities and throughout our region, and we are pleased that our peers and NADO have recognized this work," said Randy Imler, Executive Director of Catawba Regional COG. "The Town of Jonesville is one of the 26 units of local government in the four-county Catawba Region. The impact a project like this has—especially in a smaller town—is significant."

The Impact Awards are presented in memory of Aliceann Wohlbruck, NADO's first executive director, who was a lifelong advocate for regional solutions and rural economic development.

For more information, contact Erica Stahl or Eleanor Mixon at (803) 327-9041. (Email: estahl@catawbacog.org or emixon@catawbacog.org)

About Catawba Regional Council of Governments

Catawba Regional Council of Governments (COG) is an association of South Carolina local governments in Chester, Lancaster, Union, and York counties. The COG serves as a forum for intergovernmental cooperation and as a central staffing resource for grantsmanship, land use and transportation planning, community and economic development, workforce development, GIS mapping, environmental initiatives, information systems, and project management.

About NADO

The National Association of Development Organizations (NADO) promotes public policies that strengthen local governments, communities, and economies through the regional strategies, coordination efforts, and program expertise of the nation's regional development organizations. Learn more about NADO at www.nado.org.
